

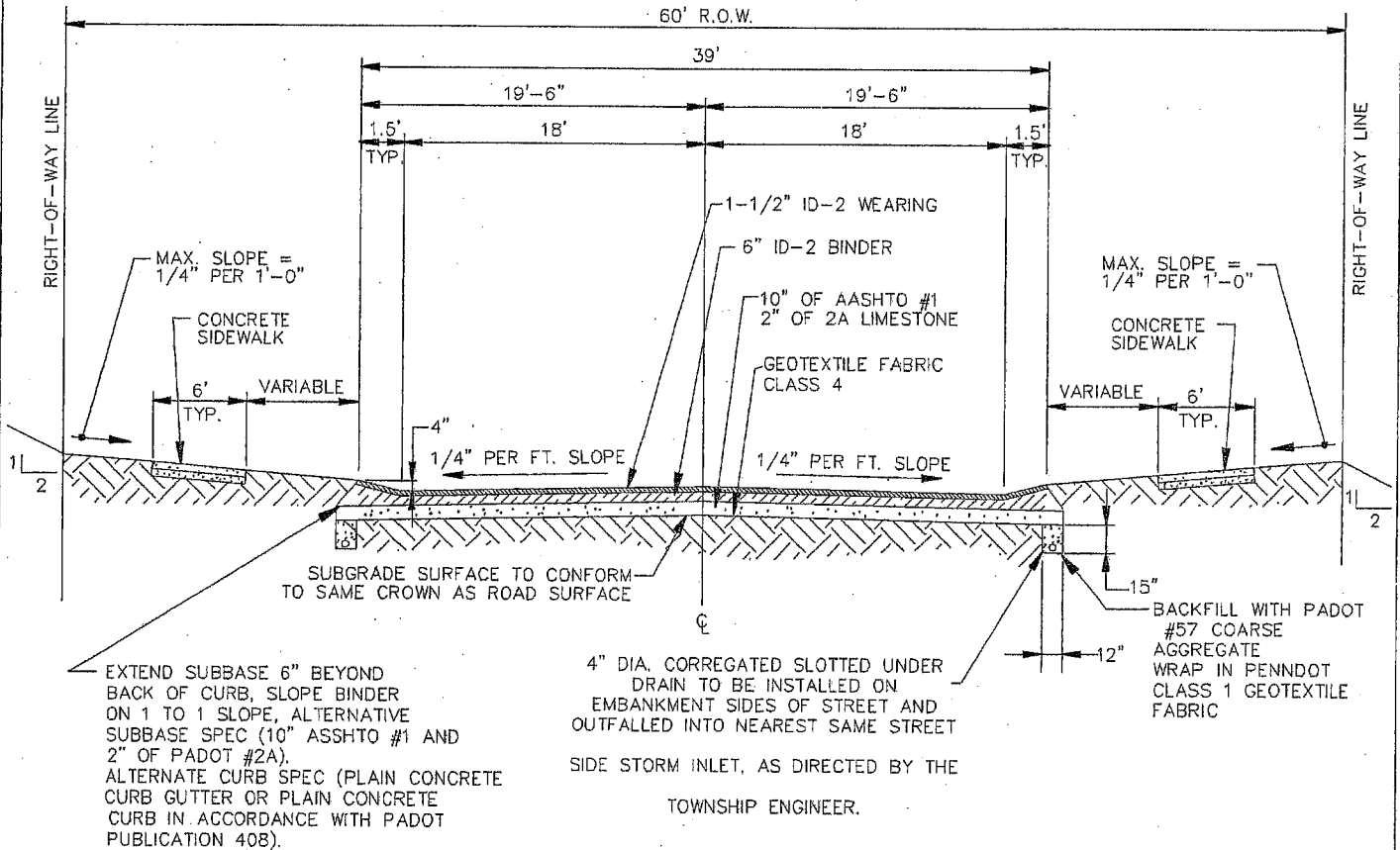
Township
Of
Middlesex

Construction
Design
Standards

Appendix

Dwg. Name: P:\25\2595\001\phase 20\land projects\2595001-20\dwg\401-2-1.dwg OCT 2003

NOTE:
2 PHASE PAVING
1/2" ID-2 WEARING AS DIRECTED BY TWP. ENGINEER



NOT TO SCALE

MIDDLESEX TOWNSHIP
133 BROWNS HILL ROAD
VALENCIA, PA 16059

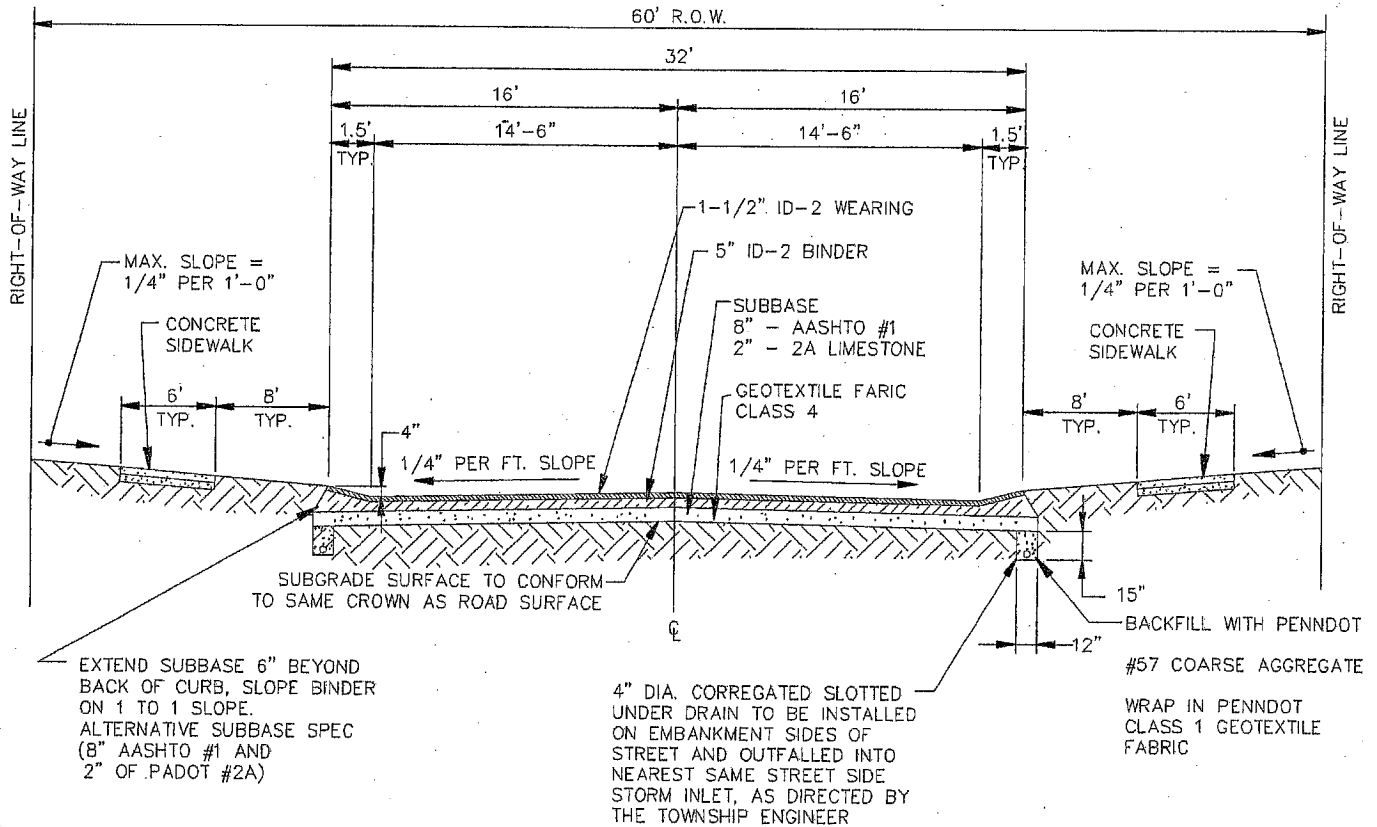
PHONE: (724) 898-3571
FAX: (724) 898-4607

TYPICAL STREET SECTION ARTERIAL STREET

REVISIONS				FIGURE
NO.	DATE	NO.	DATE	
ORIGINAL	OCTOBER 2003			401.2.1

Dwg. Name: P:\25\2595\001\phase 20\land projects\2595001-20\dwg\401-2-2.dwg OCT 2003

NOTE:
2 PHASE PAVING
1/2" ID-2 WEARING OR AS DIRECTED BY TWP. ENGINEER



MIDDLESEX TOWNSHIP
133 BROWNS HILL ROAD
VALENCIA, PA 16059

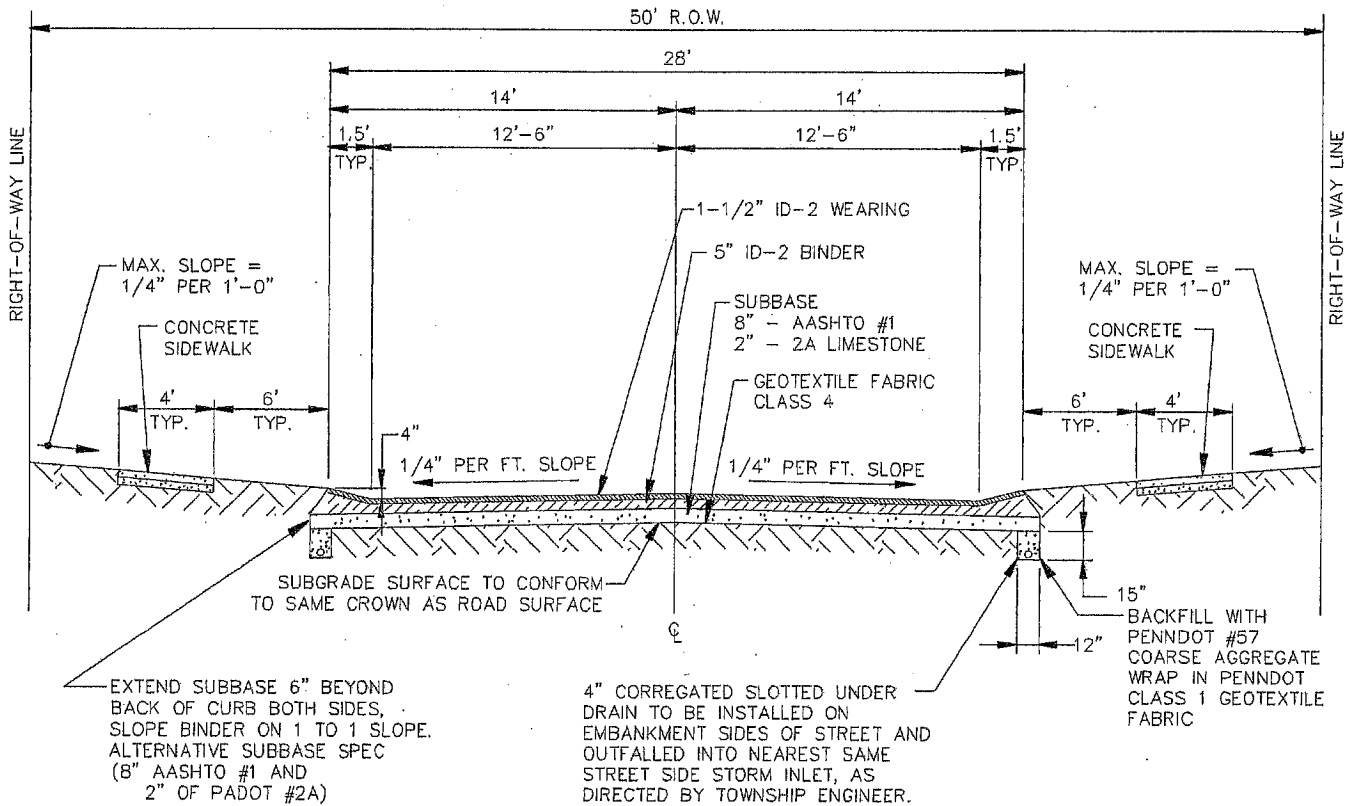
PHONE: (724) 898-3571
FAX: (724) 898-4607

TYPICAL STREET SECTION COMMERCIAL COLLECTOR STREET

REVISIONS				FIGURE
NO.	DATE	NO.	DATE	
ORIGINAL	OCTOBER 2003			401.2.2

Dwg. Name: P:\25\2595\001\phase 20\land projects\2595001-20\dwg\401-2-3.dwg OCT 2003

NOTE:
2 PHASE PAVING
1/2" ID-2 WEARING AS DIRECTED BY TWP. ENGINEER



MIDDLESEX TOWNSHIP
133 BROWNS HILL ROAD
VALENCIA, PA 16059

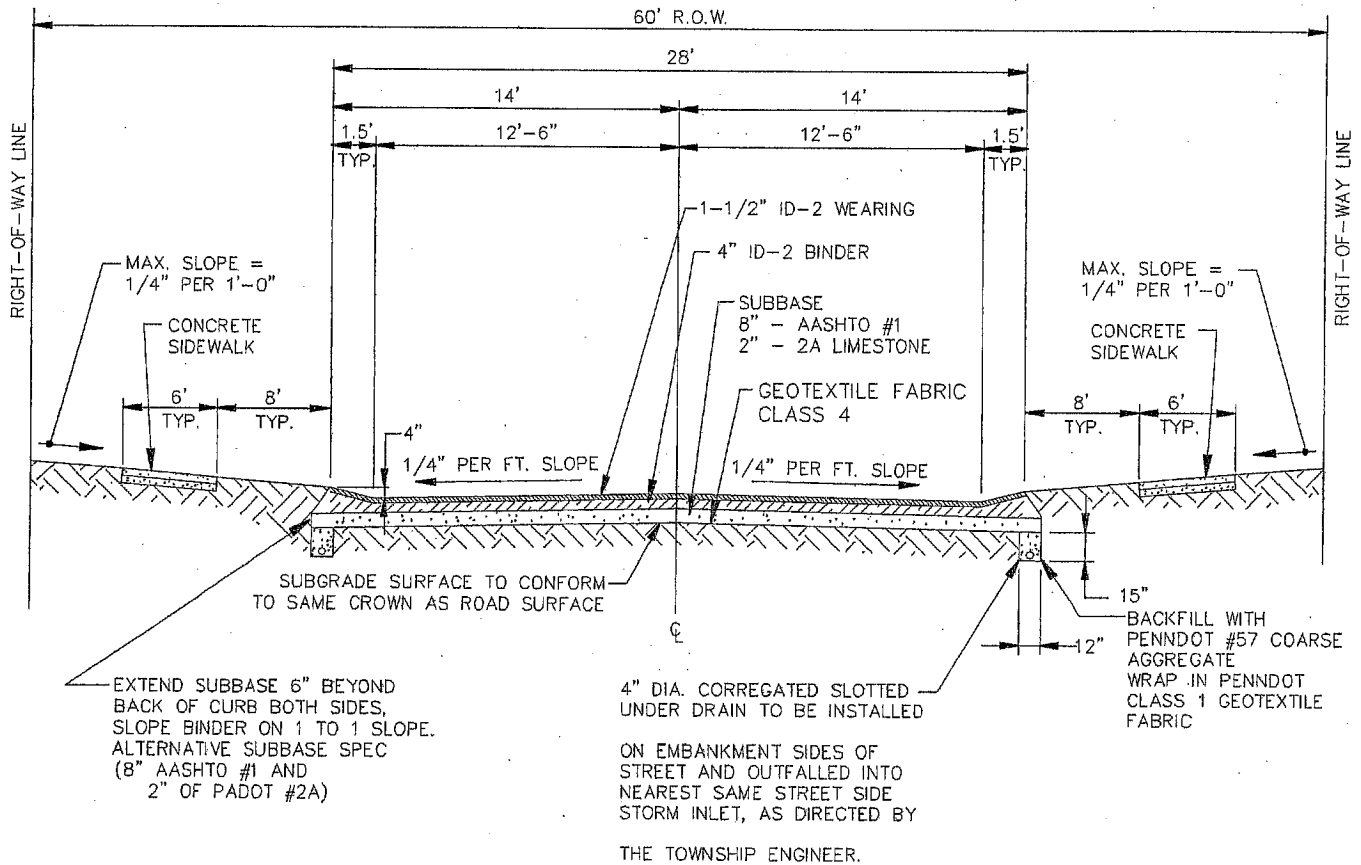
PHONE: (724) 898-3571
FAX: (724) 898-4607

TYPICAL STREET SECTION RESIDENTIAL COLLECTOR STREET

REVISIONS				FIGURE
NO.	DATE	NO.	DATE	
ORIGINAL	OCTOBER 2003			401.2.3

Dwg. Name: P:\25\2595\001\phase 20\land projects\2595001-20\dwg\401-2-4.dwg OCT 2003

NOTE:
2 PHASE PAVING
1/2" ID-2 WEARING OR AS DIRECTED BY TWP. ENGINEER



MIDDLESEX TOWNSHIP
133 BROWNS HILL ROAD
VALENCIA, PA 16059

PHONE: (724) 898-3571
FAX: (724) 898-4607

TYPICAL STREET SECTION LOCAL COMMERCIAL STREET

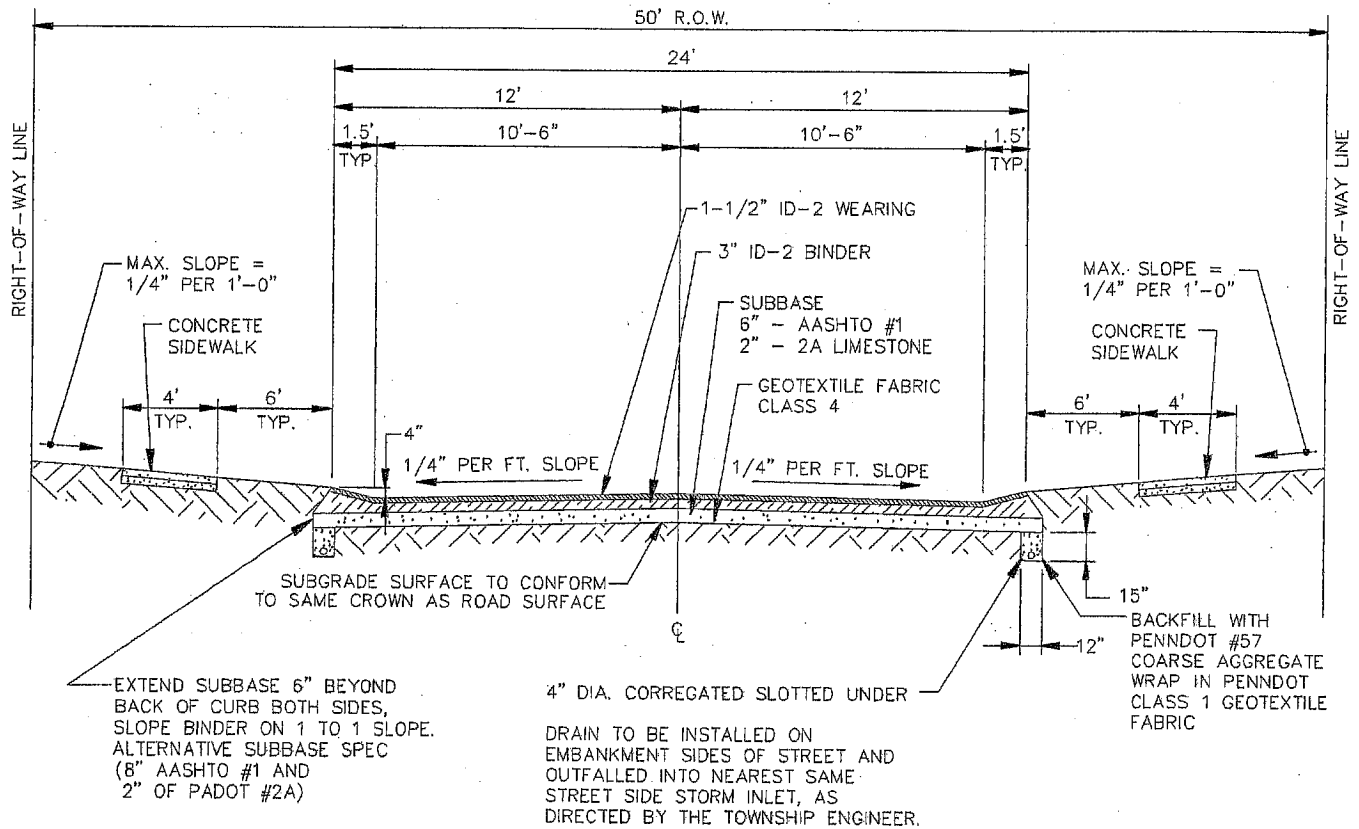
REVISIONS			
NO.	DATE	NO.	DATE
ORIGINAL	OCTOBER 2003		

FIGURE

401.2.4

Dwg. Name: P:\25\2595\001\phase 20\land projects\2595001-20\dwg\rd-01.dwg OCT 2003

NOTE:
2 PHASE PAVING
1/2" ID-2 WEARING AS DIRECTED BY TWP. ENGINEER



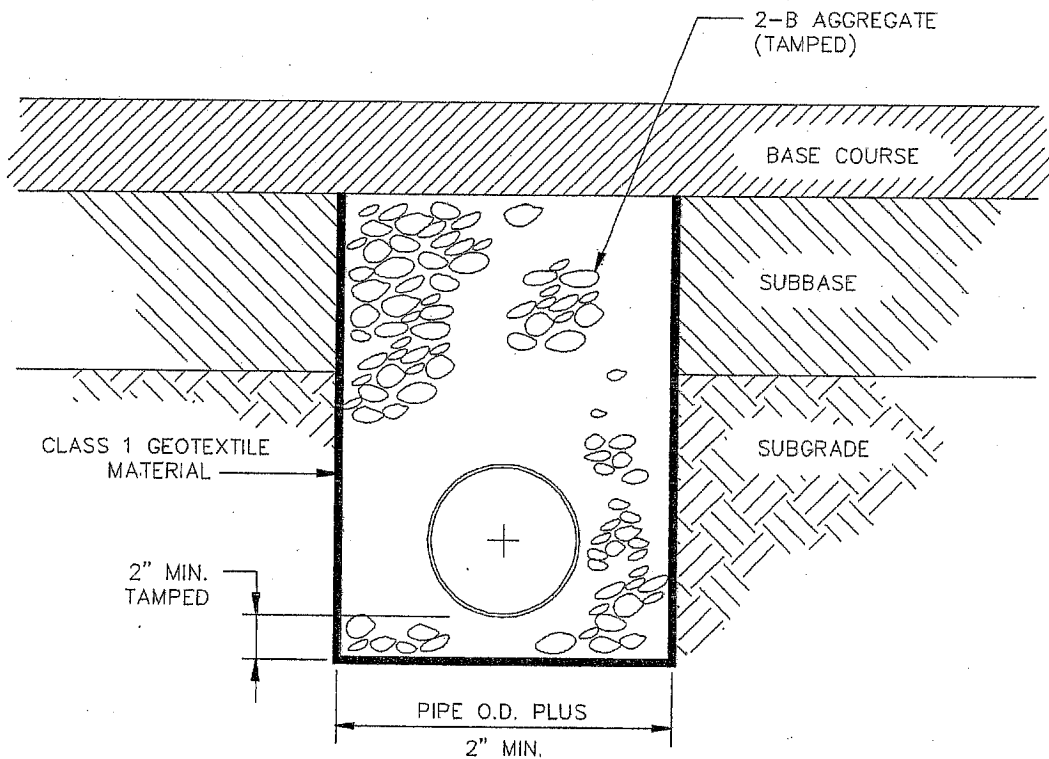
MIDDLESEX TOWNSHIP
133 BROWNS HILL ROAD
VALENCIA, PA 16059

PHONE: (724) 898-3571
FAX: (724) 898-4607

TYPICAL STREET SECTION LOCAL RESIDENTIAL STREET

REVISIONS				FIGURE
NO.	DATE	NO.	DATE	
ORIGINAL	OCTOBER 2003			401.2.5

Dwg. Name: P:\25\2595\001\phase 20\land projects\2595001-20\dwg\401-2-7.dwg OCT 2003



NOTES

1. MATERIALS AND CONSTRUCTION SHALL CONFORM WITH THE REQUIREMENTS OF PENNDOT 408, SECTIONS 610 AND 615.

NOT TO SCALE

REFERENCE RC-30-PENNDOT PUBLICATION 72

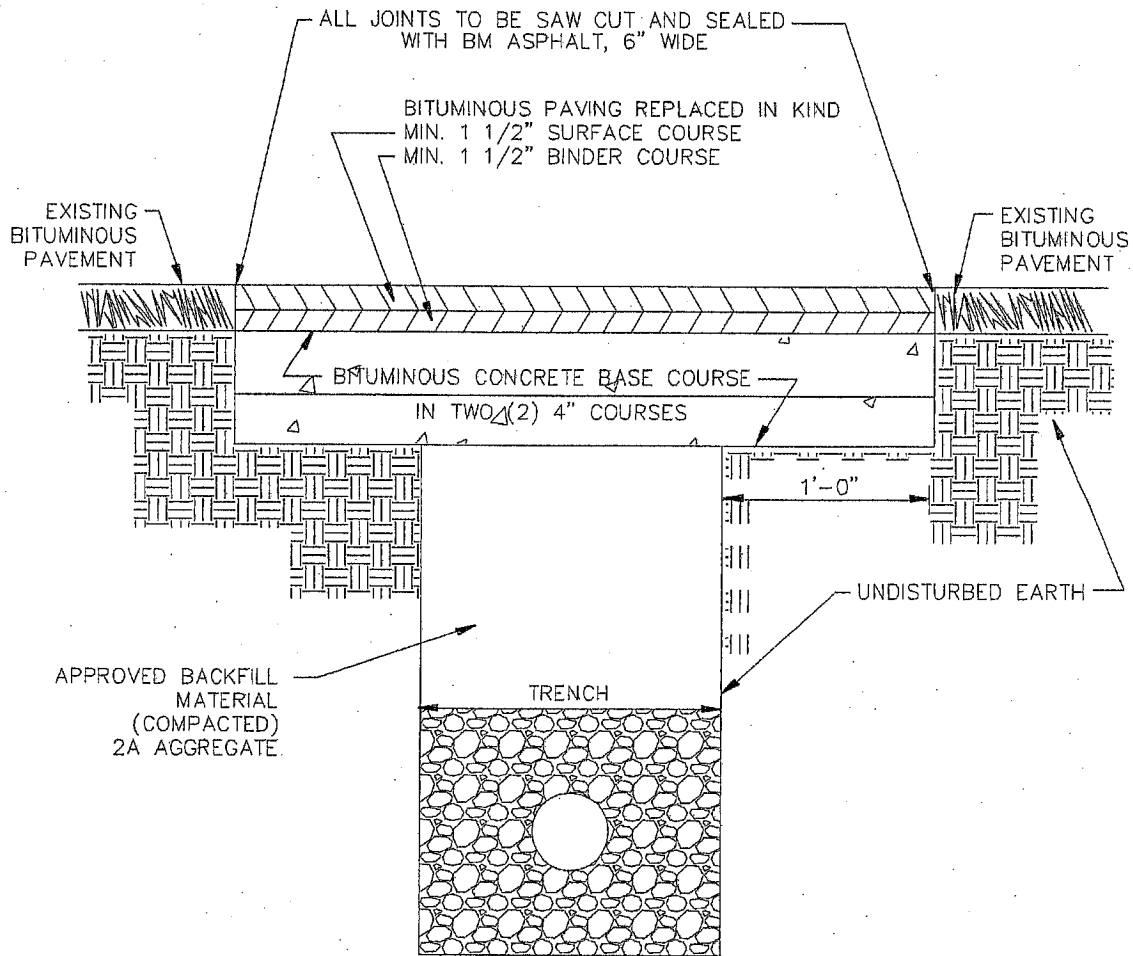
MIDDLESEX TOWNSHIP
133 BROWNS HILL ROAD
VALENCIA, PA 16059

PHONE: (724) 898-3571
FAX: (724) 898-4607

SUBSURFACE DRAIN (Pavement Base Drain) DETAIL

REVISIONS				FIGURE
NO.	DATE	NO.	DATE	
ORIGINAL	OCTOBER 2003			401.2.7

Dwg. Name: P:\25\2595\001\phase 20\land projects\2585001-20\dwg\401-2-10.dwg OCT 2003



NOTE:
TRENCH REPAVING REQUIREMENTS FOR
OTHER THAN BITUMINOUS PAVING
WILL BE DETERMINED BY THE
TOWNSHIP ENGINEER.

NOT TO SCALE

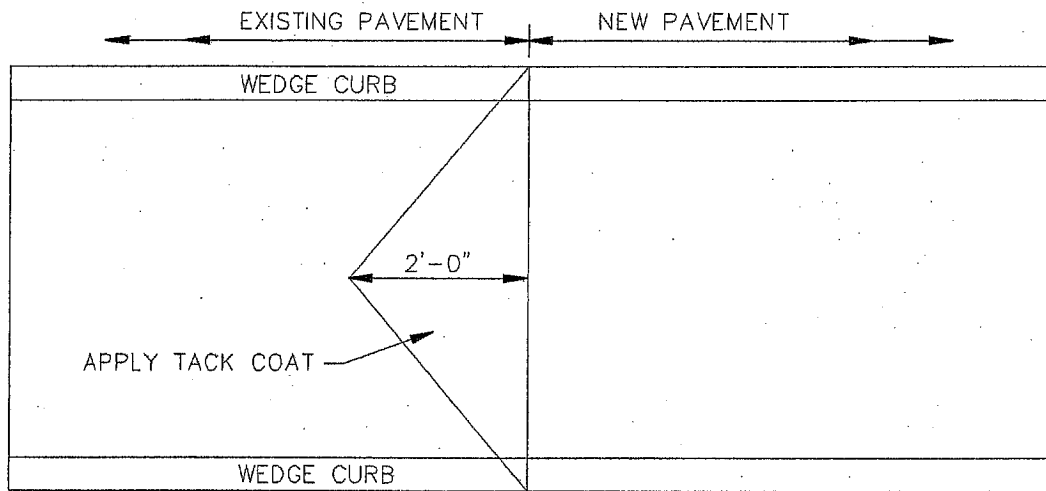
MIDDLESEX TOWNSHIP
133 BROWNS HILL ROAD
VALENCIA, PA 16059

PHONE: (724) 898-3571
FAX: (724) 898-4607

TRENCH REPAVING FOR BITUMINOUS PAVING

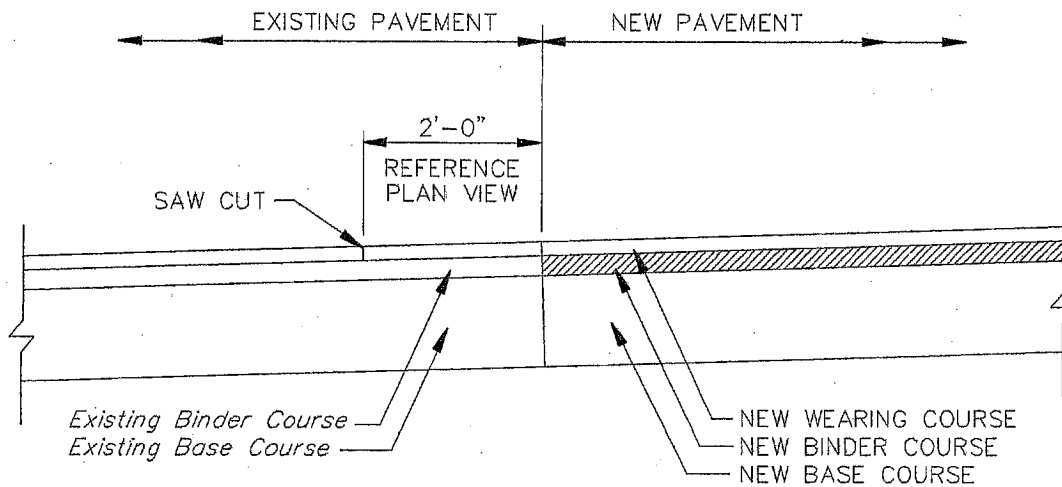
REVISIONS				FIGURE
NO.	DATE	NO.	DATE	
ORIGINAL	OCTOBER 2003			401.2.10

Dwg. Name: P:\25\2595\001\phase 20\land projects\2595001-20\dwg\401-2-11.dwg OCT 2003



PLAN VIEW

SEAL ALL EDGES AS SPECIFIED IN
FORM 408, SECTION 401.3(j)3



WHERE NEW ASPHALT PAVEMENT MEETS
EXISTING ASPHALT PAVEMENT, CUT NOTCH
AS SHOWN IN PLAN VIEW.

NOT TO SCALE

REFERENCE RC-28 PENNDOT PUB. 72

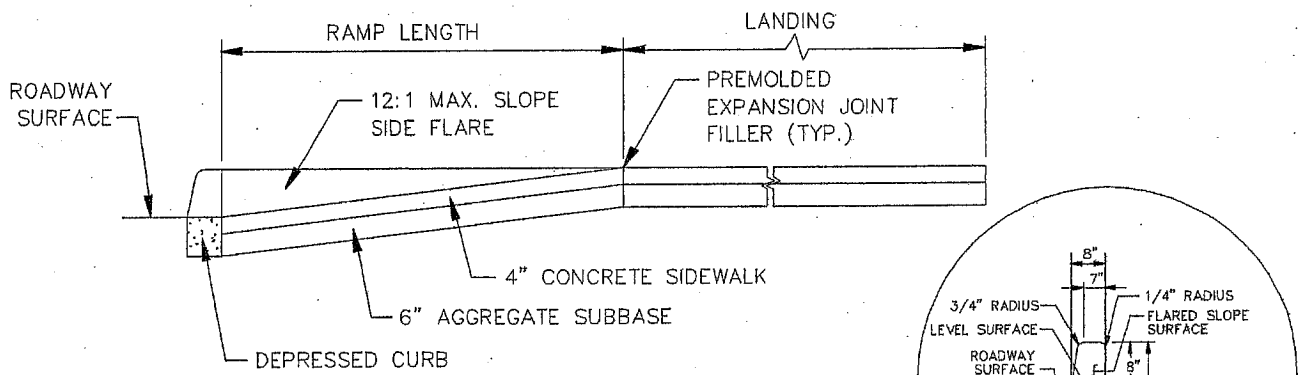
MIDDLESEX TOWNSHIP
133 BROWNS HILL ROAD
VALENCIA, PA 16059

PHONE: (724) 898-3571
FAX: (724) 898-4607

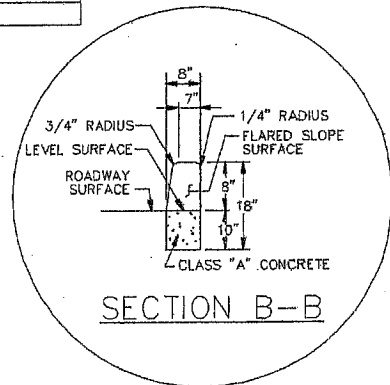
PAVING NOTCH DETAIL

REVISIONS				FIGURE
NO.	DATE	NO.	DATE	
ORIGINAL	OCTOBER 2003			401.2.11

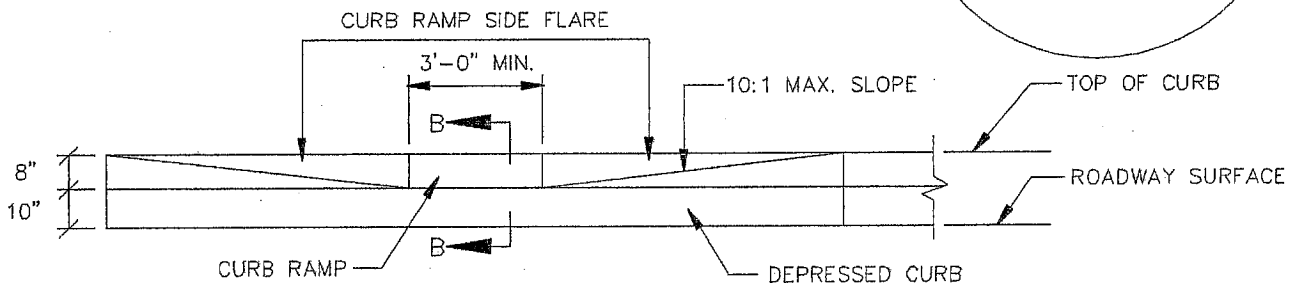
Dwg. Name: P:\25\2595\001\phase 20\land projects\2595001-20\dwg\401-2-13.dwg OCT 2003



SECTION A-A

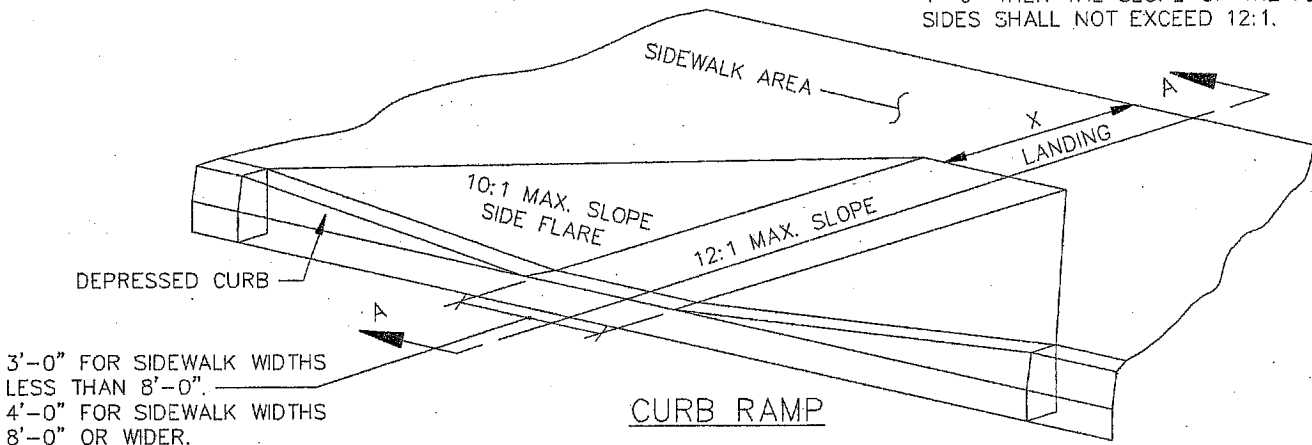


SECTION B-B



ELEVATION

X SHALL BE EQUAL TO OR GREATER THAN 3'-0". IF X IS LESS THAN 4'-0" THEN THE SLOPE OF THE FLARED SIDES SHALL NOT EXCEED 12:1.



CURB RAMP

3'-0" FOR SIDEWALK WIDTHS LESS THAN 8'-0"
4'-0" FOR SIDEWALK WIDTHS 8'-0" OR WIDER.

NOT TO SCALE

REFERENCE RC-67 - PENNDOT PUBLICATION 72

MIDDLESEX TOWNSHIP
133 BROWNS HILL ROAD
VALENCIA, PA 16059

PHONE: (724) 898-3571
FAX: (724) 898-4607

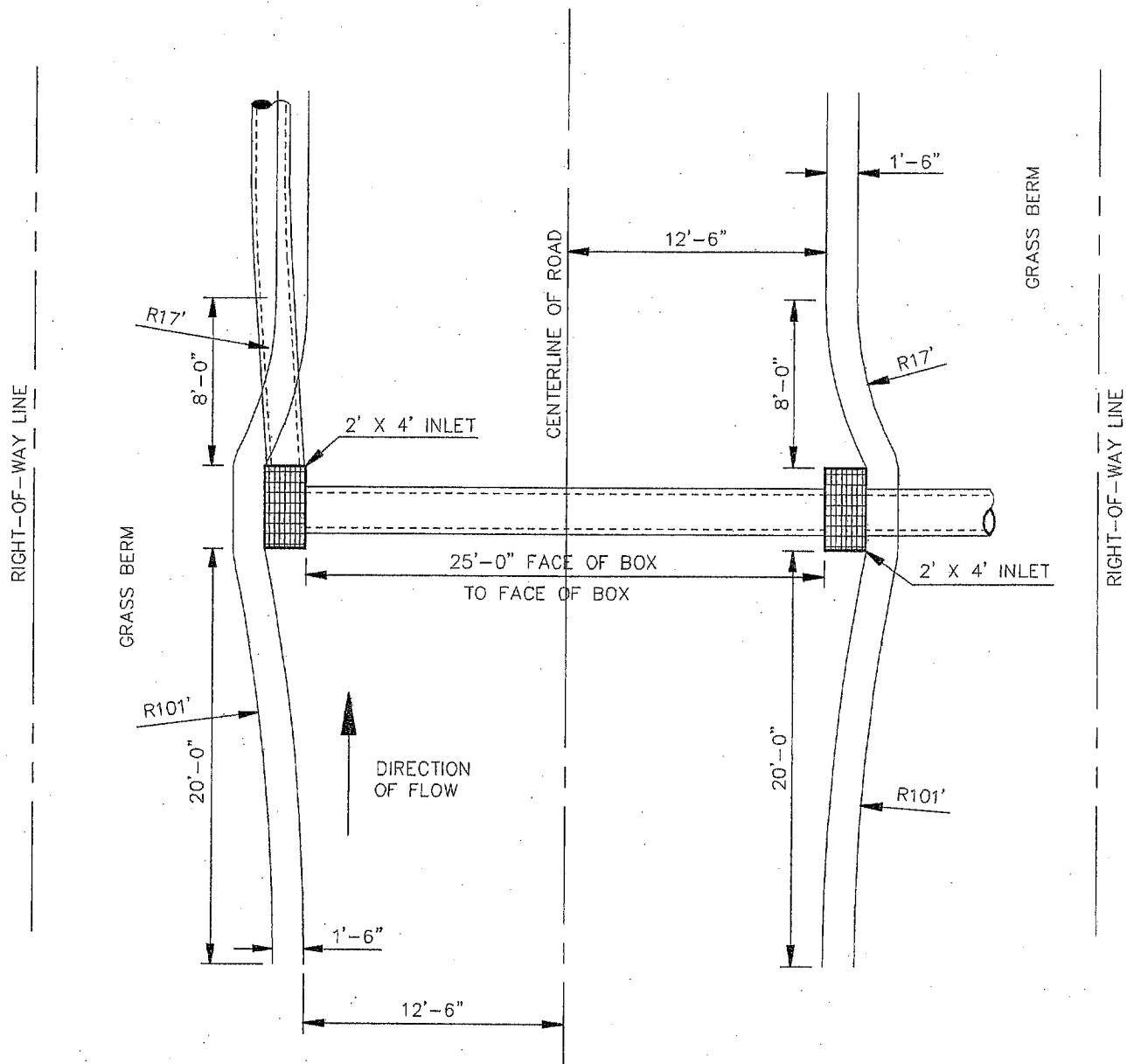
CURB CUT/ RAMP DETAIL

REVISIONS			
NO.	DATE	NO.	DATE
ORIGINAL	OCTOBER 2003		

FIGURE

401.2.13

Dwg. Name: P:\25\2595\001\phase 20\land projects\2595001-20\dwg\401-2-3-1.dwg OCT 2003



NOT TO SCALE

MIDDLESEX TOWNSHIP
133 BROWNS HILL ROAD
VALENCIA, PA 16059

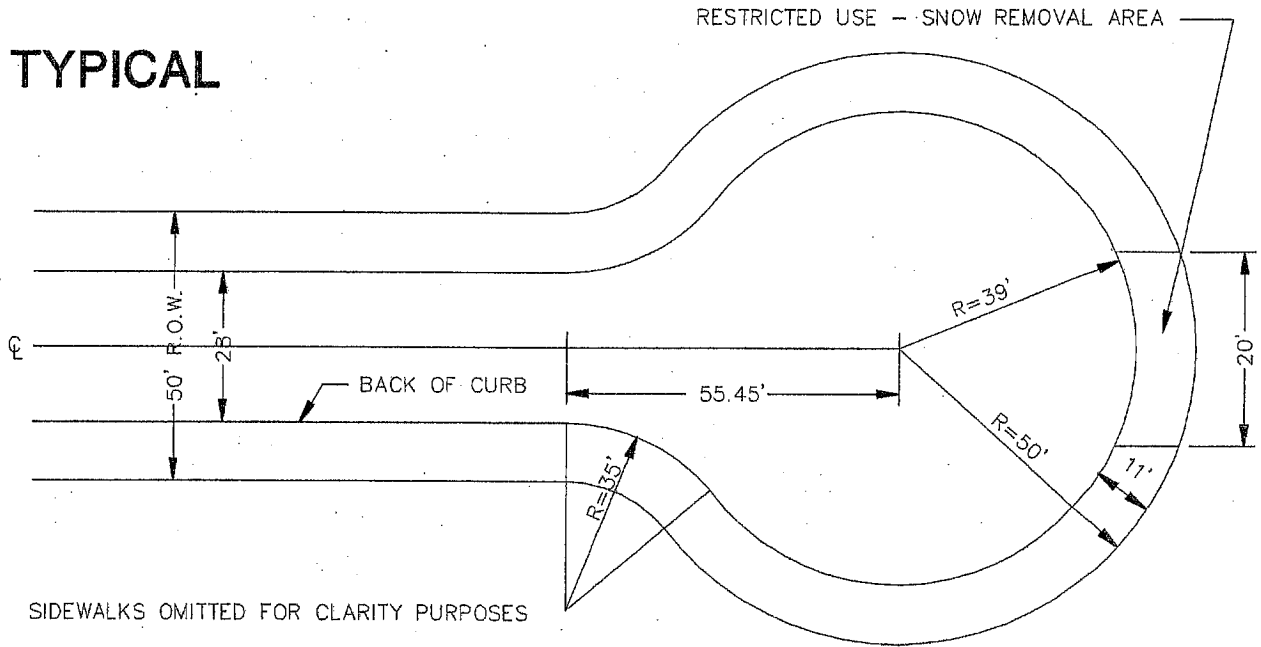
PHONE: (724) 898-3571
FAX: (724) 898-4607

EARRED INLET FOR RESIDENTIAL COLLECTOR STREET

REVISIONS				FIGURE
NO.	DATE	NO.	DATE	
ORIGINAL	OCTOBER 2003			401.2.3.1

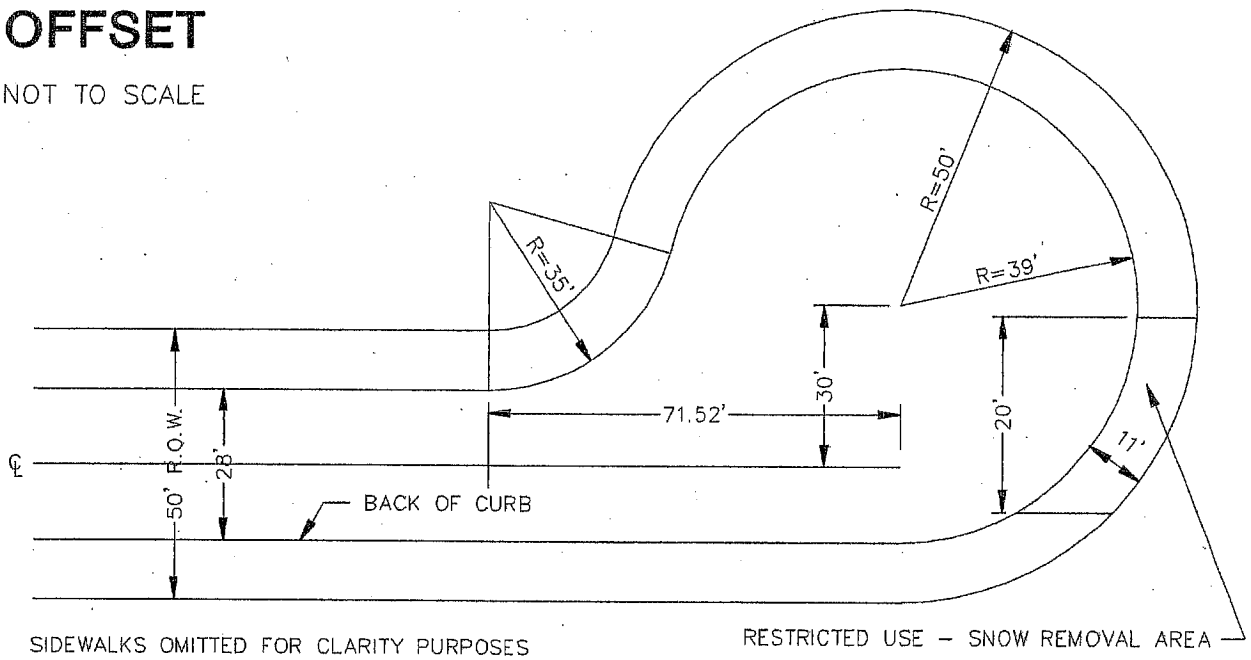
Dwg. Name: P:\25\2585\001\phase 20\land projects\2585001-20\dwg\401-3-2A.dwg OCT 2003

TYPICAL



OFFSET

NOT TO SCALE



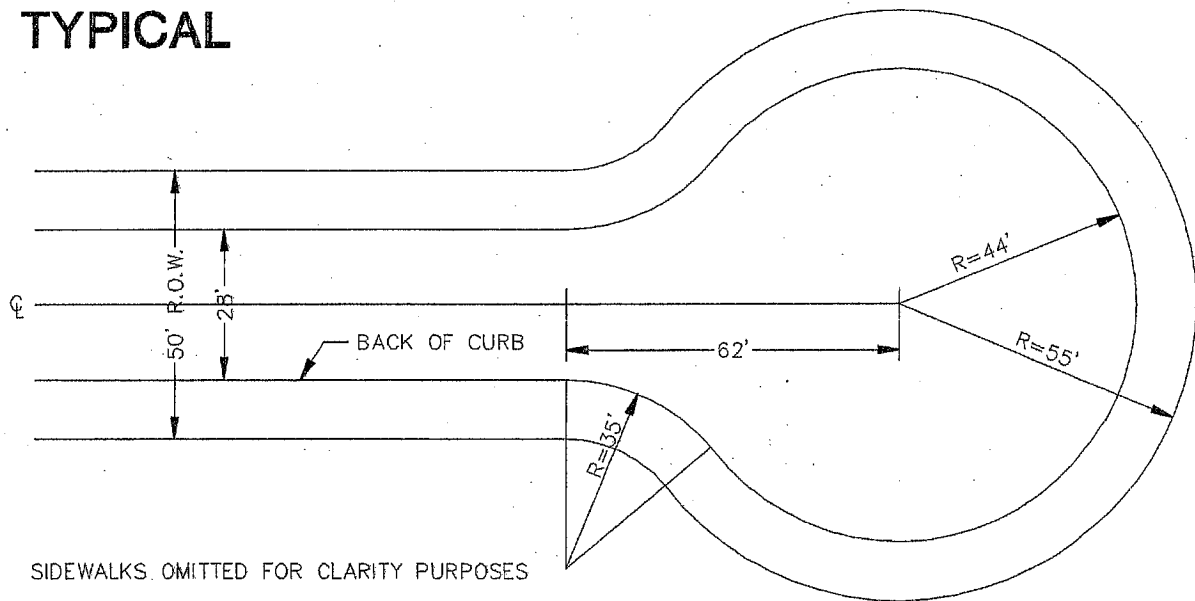
MIDDLESEX TOWNSHIP
133 BROWNS HILL ROAD
VALENCIA, PA 16059

PHONE: (724) 898-3571
FAX: (724) 898-4607

TYPICAL AND OFFSET CUL DE SAC DETAILS (RESIDENTIAL)

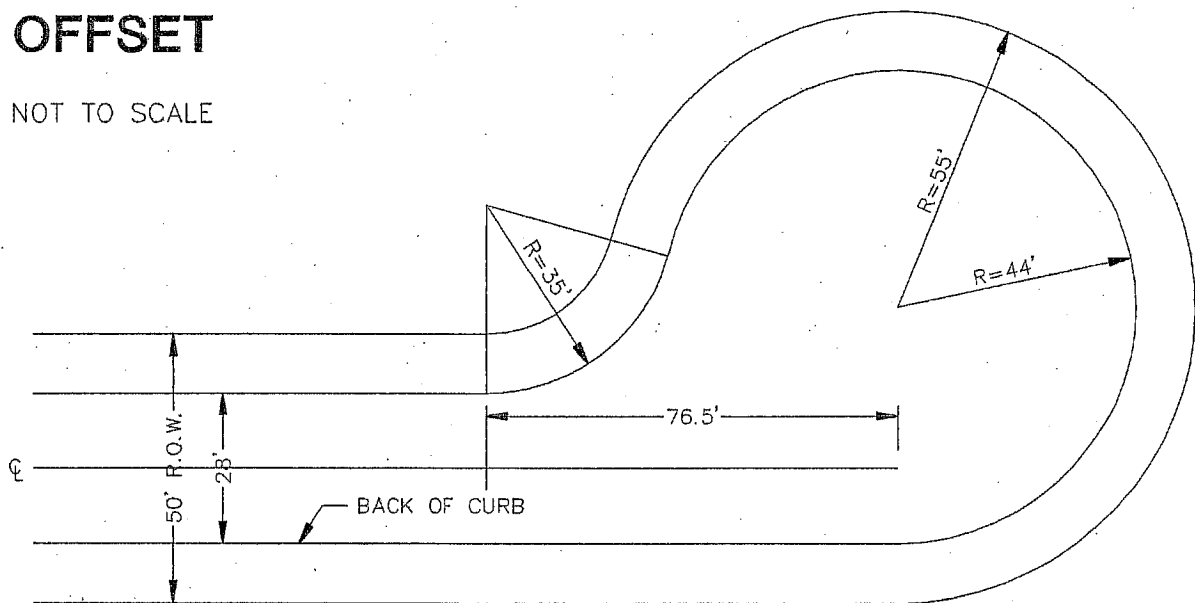
REVISIONS				FIGURE
NO.	DATE	NO.	DATE	
ORIGINAL	OCTOBER 2003			401.3.2A

TYPICAL



OFFSET

NOT TO SCALE



SIDEWALKS OMITTED FOR CLARITY PURPOSES

MIDDLESEX TOWNSHIP
133 BROWNS HILL ROAD
VALENCIA, PA 16059

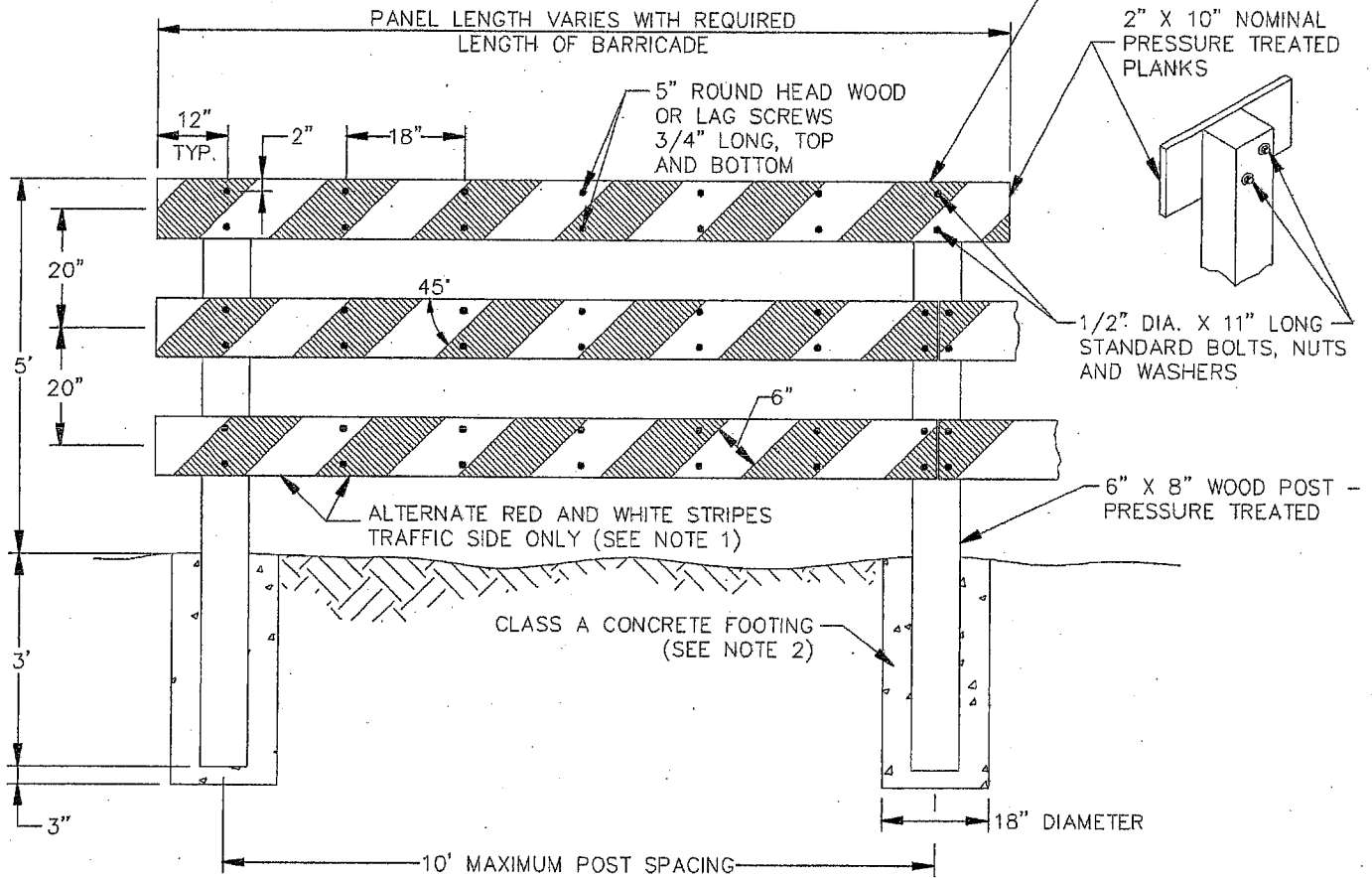
PHONE: (724) 898-3571
FAX: (724) 898-4607

TYPICAL AND OFFSET CUL DE SAC DETAILS (COMMERCIAL)

REVISIONS				FIGURE
NO.	DATE	NO.	DATE	
ORIGINAL	OCTOBER 2003			401.3.2B

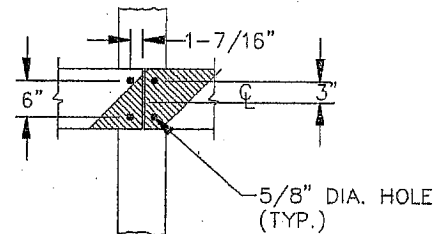
CLASS I, CLASS I-A OR CLASS II
REFLECTIVE MATERIAL APPLIED TO
0.063" X 10" ALUMINUM BLANK
AND FASTENED TO WOOD PLANKS
(SEE NOTE 1)

POST TO PANEL
CONNECTION



NOTES

1. ONLY CLASS I, CLASS I-A OR CLASS II REFLECTIVE SHEETING MATERIAL SUPPLIED BY A MANUFACTURER, AS LISTED IN PENNDOT BULLETIN 15 PERMITTED.
2. MECHANICALLY DRIVE POSTS OR ERECT IN CONCRETE FOOTING.



BUTT SPLICE

NOT TO SCALE

REFERENCE RC-63 - PENNDOT PUBLICATION 72

Dwg. Name: P:\25\2595\001\phase 20\land projects\2595001-20\dwg\401-3-3.dwg OCT 2003

MIDDLESEX TOWNSHIP
133 BROWNS HILL ROAD
VALENCIA, PA 16059

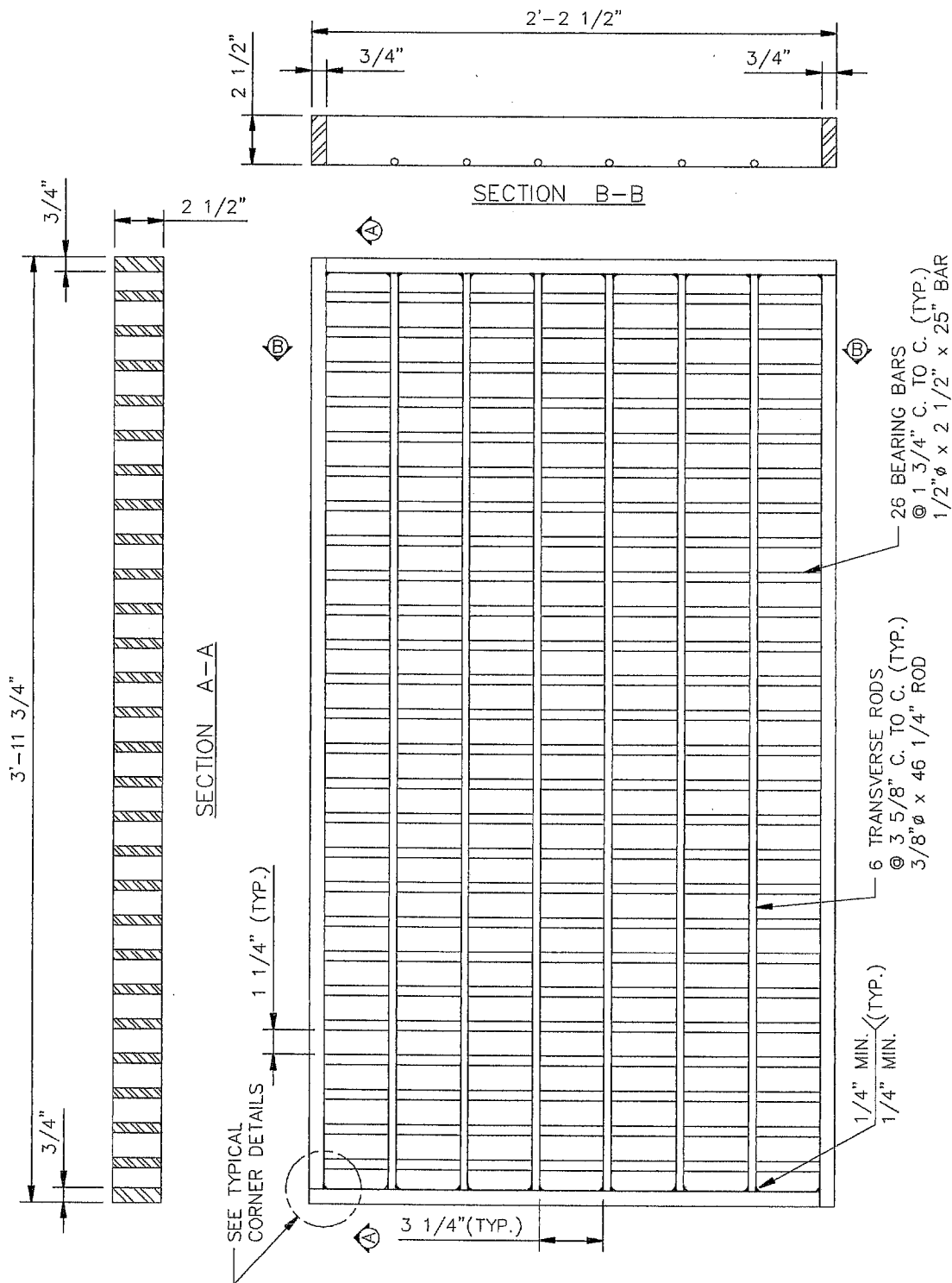
PHONE: (724) 898-3571
FAX: (724) 898-4607

BARRICADE DETAIL FOR DEAD END ROADS

REVISIONS			
NO.	DATE	NO.	DATE
ORIGINAL	OCTOBER 2003		

FIGURE

401.3.3



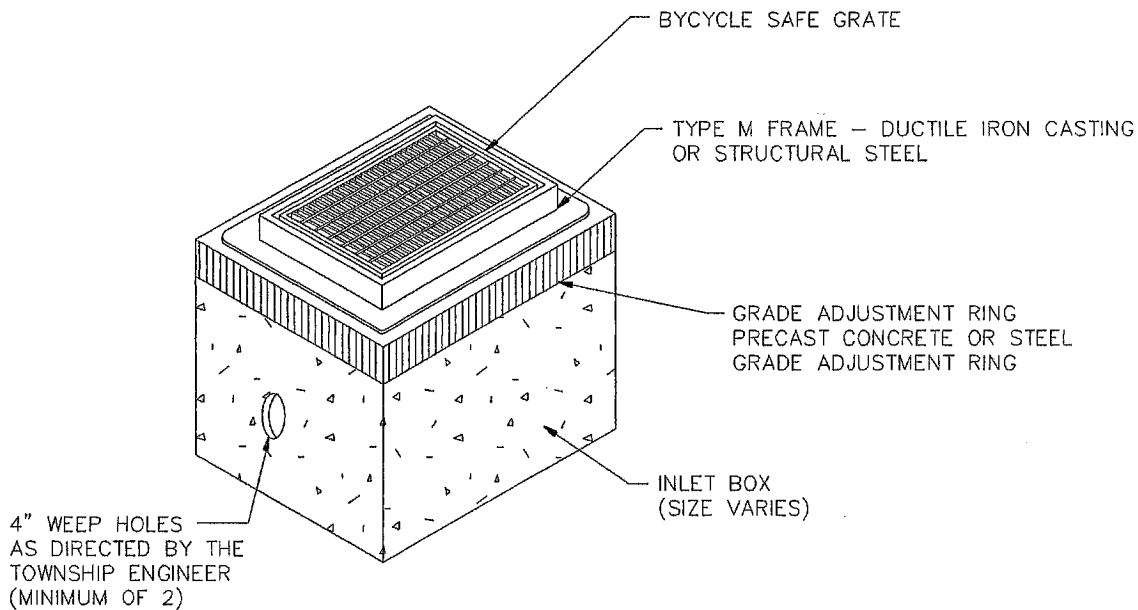
NOT TO SCALE

MIDDLESEX TOWNSHIP
133 BROWNS HILL ROAD
VALENCIA, PA 16059

PHONE: (724) 898-3571
FAX: (724) 898-4607

STRUCTURAL STEEL BICYCLE SAFE GRATE

REVISIONS				FIGURE
NO.	DATE	NO.	DATE	
ORIGINAL	OCTOBER 2003			402.2.1



NOTES:

1. ALL CONSTRUCTION SHALL BE IN ACCORDANCE WITH PENNDOT PUBLICATION 408, SECTION 605 AND STANDARDS FOR ROADWAY CONSTRUCTION, RC-34. CONTRACTOR SHALL VERIFY INLET BOX SIZING BASED ON PIPE SIZES AND ALIGNMENT PRIOR TO ORDERING PRECAST STRUCTURES.
2. ALL DRAINAGE STRUCTURES SHALL HAVE POURED-IN-PLACE CONCRETE CHANNEL BOTTOMS.
3. LADDER BARS TO BE INSTALLED IN STRUCTURES EXCEEDING A DEPTH OF 5 FEET.

NOT TO SCALE

REFERENCE RC-34 -- PENNDOT PUBLICATION 72

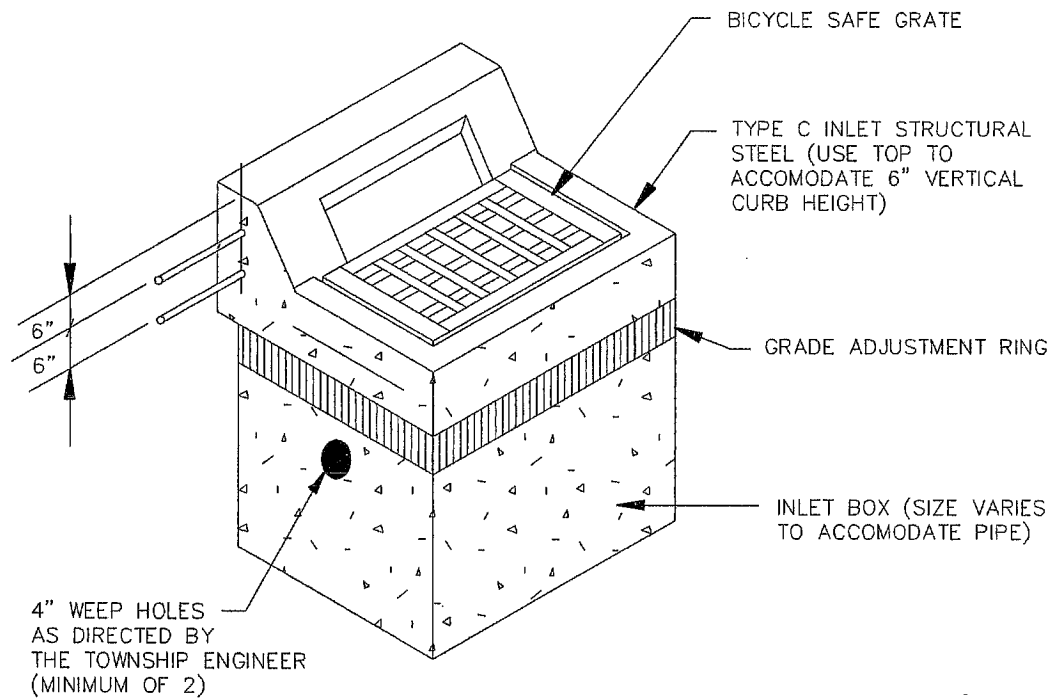
MIDDLESEX TOWNSHIP
133 BROWNS HILL ROAD
VALENCIA, PA 16059

PHONE: (724) 898-3571
FAX: (724) 898-4607

**TYPE "M"
INLET DETAIL**

REVISIONS				FIGURE
NO.	DATE	NO.	DATE	
ORIGINAL	OCTOBER 2003			402.2A

Dwg. Name: P:\25\2595\001\phase 20\land projects\2595001-20\dwg\402-2B.dwg OCT 2003



NOTES:

1. ALL CONSTRUCTION SHALL BE IN ACCORDANCE WITH PENNDOT PUBLICATION 408, SECTION 605 AND STANDARDS FOR ROADWAY CONSTRUCTION, RC-34. CONTRACTOR SHALL VERIFY INLET BOX SIZING BASED ON PIPE SIZES AND ALIGNMENT PRIOR TO ORDERING PRECAST STRUCTURES.
2. ALL DRAINAGE STRUCTURES SHALL HAVE POURED-IN-PLACE CONCRETE CHANNEL BOTTOMS.
3. LADDER BARS TO BE INSTALLED IN STRUCTURES EXCEEDING A DEPTH OF 5 FEET.

NOT TO SCALE

REFERENCE RC-34 - PENNDOT PUBLICATION 72

MIDDLESEX TOWNSHIP
133 BROWNS HILL ROAD
VALENCIA, PA 16059

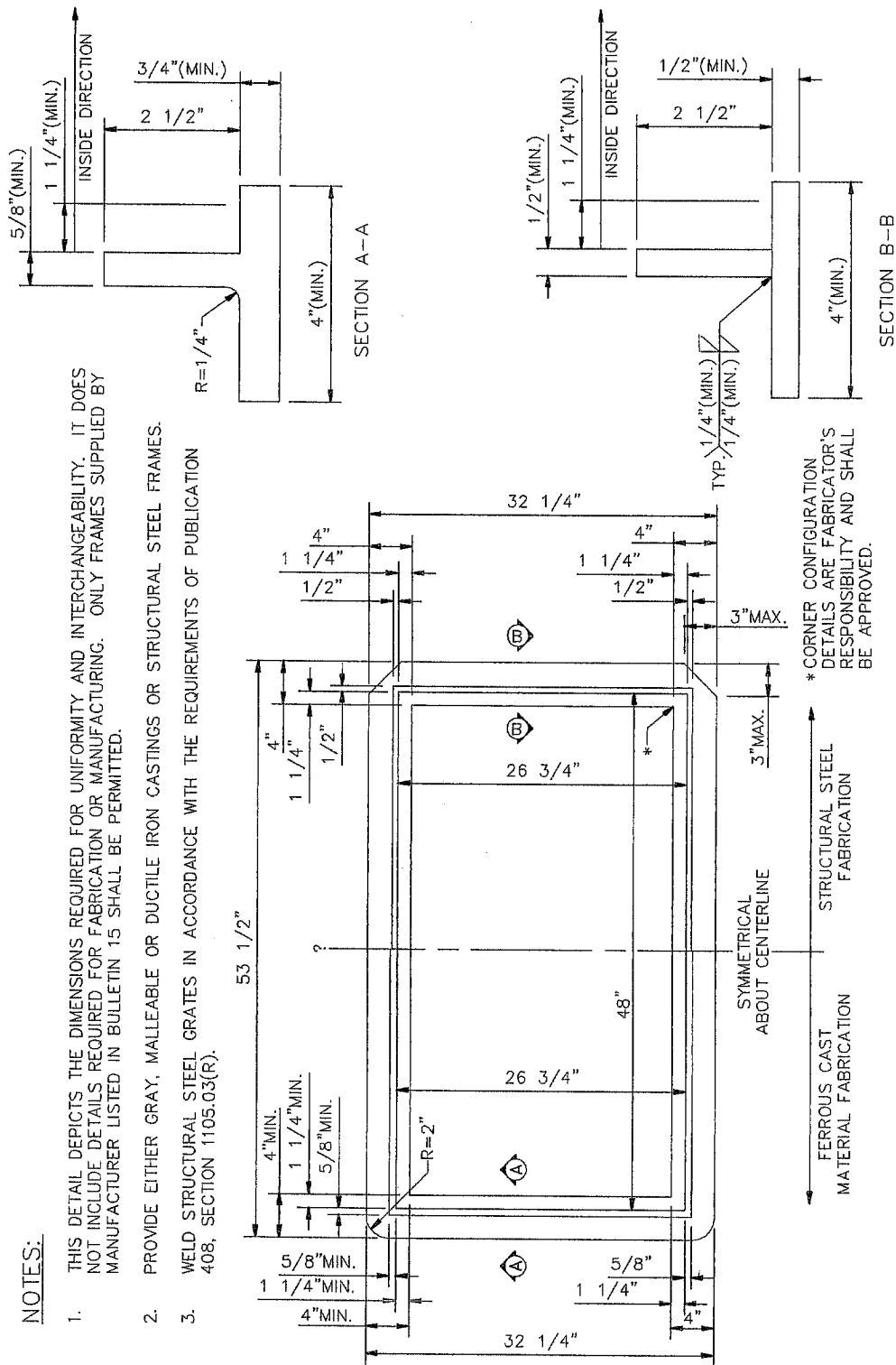
PHONE: (724) 898-3571
FAX: (724) 898-4607

**TYPE "C"
INLET DETAIL**

REVISIONS				FIGURE
NO.	DATE	NO.	DATE	
ORIGINAL	OCTOBER 2003			402.2B

NOTES:

1. THIS DETAIL DEPICTS THE DIMENSIONS REQUIRED FOR UNIFORMITY AND INTERCHANGEABILITY. IT DOES NOT INCLUDE DETAILS REQUIRED FOR FABRICATION OR MANUFACTURING. ONLY FRAMES SUPPLIED BY MANUFACTURER LISTED IN BULLETIN 15 SHALL BE PERMITTED.
2. PROVIDE EITHER GRAY, MALLEABLE OR DUCTILE IRON CASTINGS OR STRUCTURAL STEEL FRAMES.
3. WELD STRUCTURAL STEEL GRATES IN ACCORDANCE WITH THE REQUIREMENTS OF PUBLICATION 408, SECTION 1105.03(R).



NOT TO SCALE

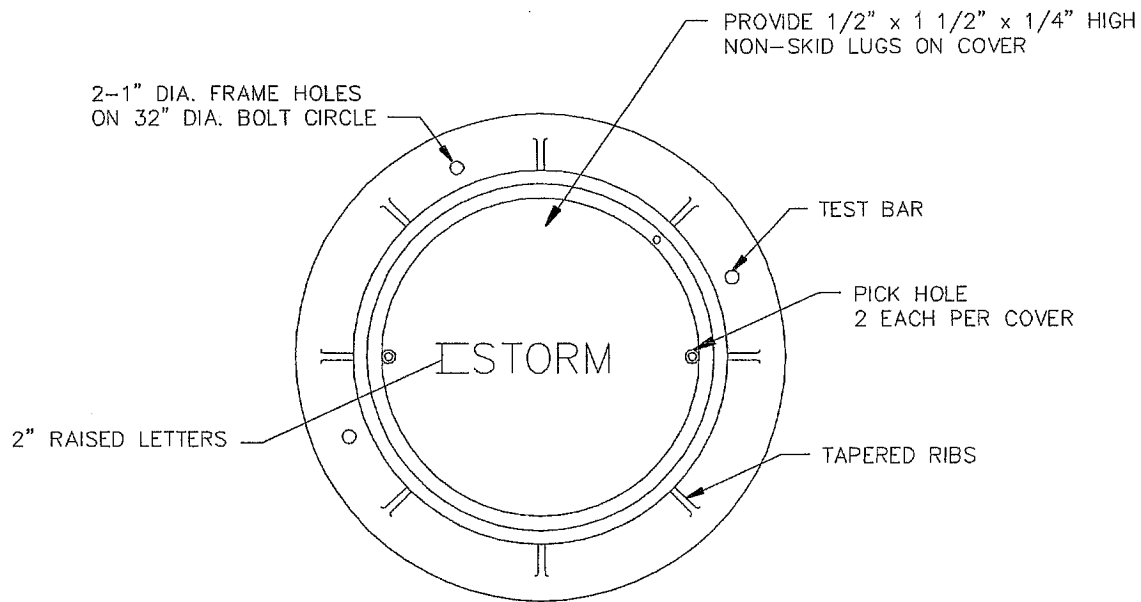
MIDDLESEX TOWNSHIP
133 BROWNS HILL ROAD
VALENCIA, PA 16059

PHONE: (724) 898-3571
FAX: (724) 898-4607

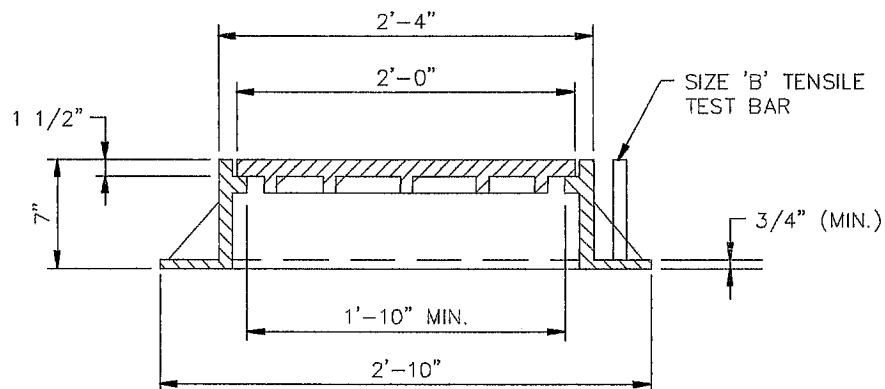
**TYPE "M"
INLET FRAME DETAIL**

REVISIONS				FIGURE
NO.	DATE	NO.	DATE	
ORIGINAL	OCTOBER 2003			402.2.2

Dwg. Name: P:\25\2595\001\Phase 20\Land Projects\2595001-20\dwg\402-3A.dwg OCT. 2003



PLAN



SECTION

NOT TO SCALE

REFERENCE RC-39 - PENNDOT PUBLICATION 72

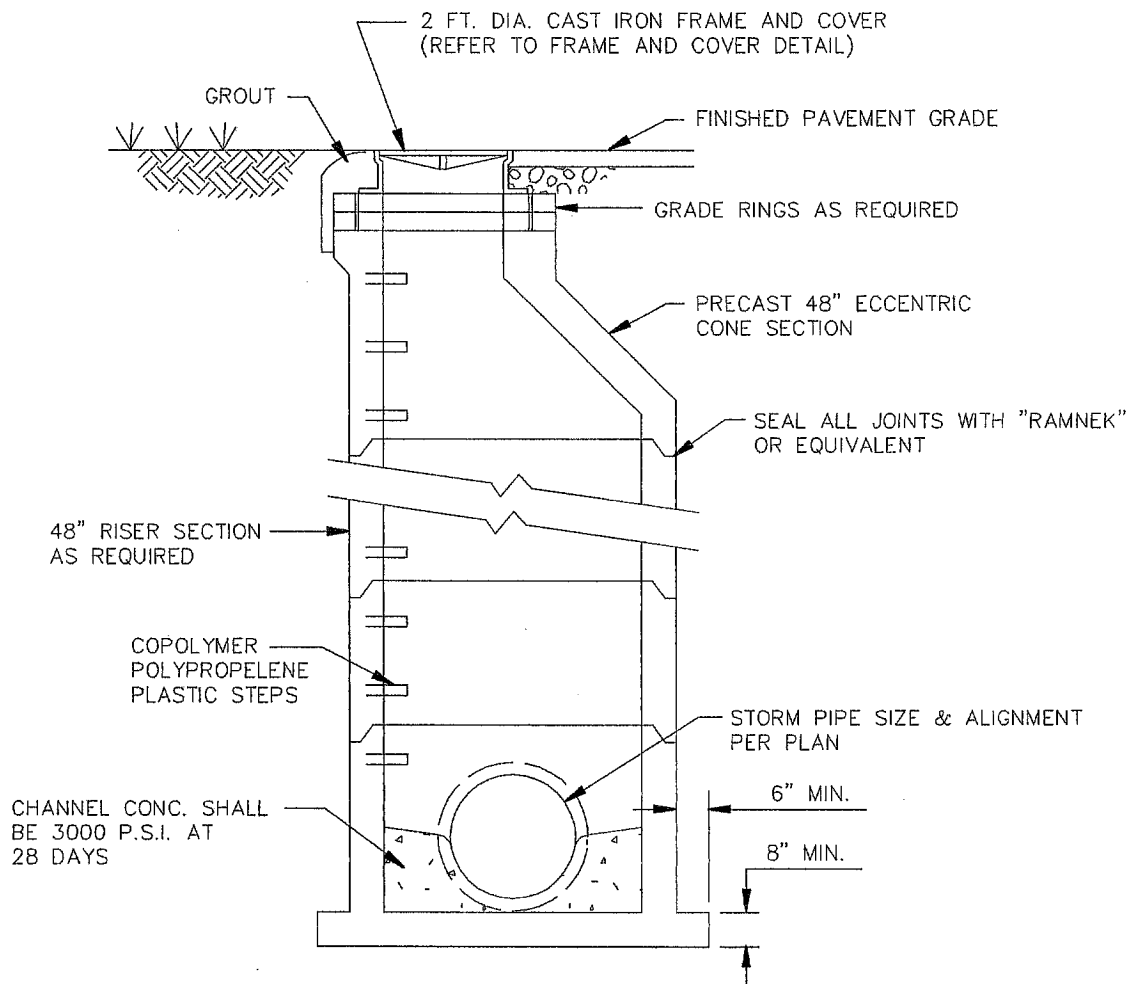
MIDDLESEX TOWNSHIP
133 BROWNS HILL ROAD
VALENCIA, PA 16059

PHONE: (724) 898-3571
FAX: (724) 898-4607

STANDARD MANHOLE FRAME & COVER

REVISIONS				FIGURE
NO.	DATE	NO.	DATE	
ORIGINAL	OCTOBER 2003			402.3A

Dwg. Name: P:\25\2595\001\Phase 20\Land Projects\2595001-20\dwg\402-3B.dwg . OCT. 2003



ALL MATERIALS AND CONSTRUCTION SHALL MEET REQUIREMENTS OF PENNDOT PUBLICATION 408

NOT TO SCALE

REFERENCE RC-39 - PENNDOT PUBLICATION 72

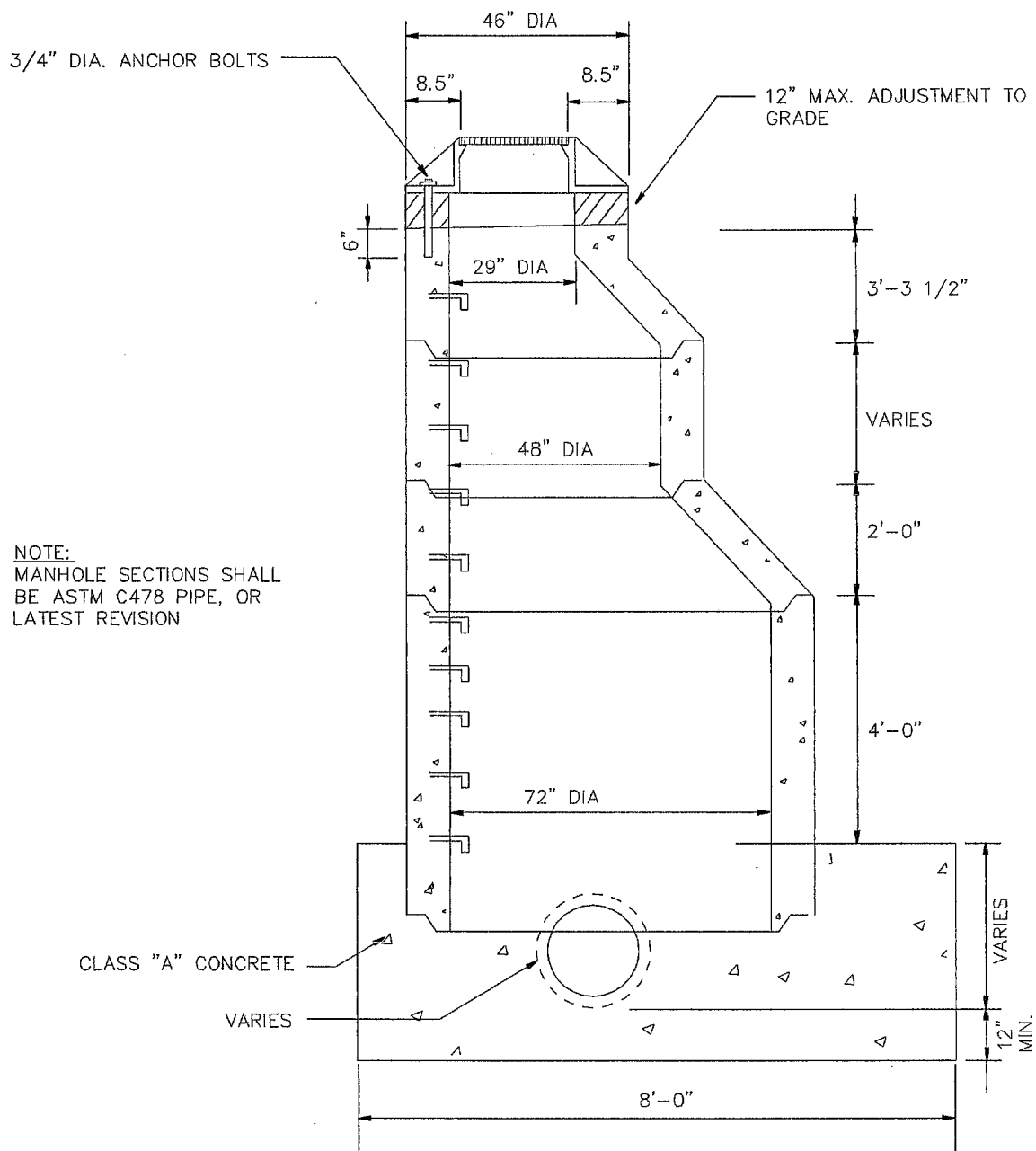
MIDDLESEX TOWNSHIP
133 BROWNS HILL ROAD
VALENCIA, PA 16059

PHONE: (724) 898-3571
FAX: (724) 898-4607

STORM MANHOLE DETAIL (TYPICAL SECTION)

REVISIONS				FIGURE
NO.	DATE	NO.	DATE	
ORIGINAL	OCTOBER 2003			402.3B

Dwg. Name: P:\25\2595\001\Phase 20\Land Projects\2595001-20\dwg\402-3D.dwg OCT, 2003



NOT TO SCALE

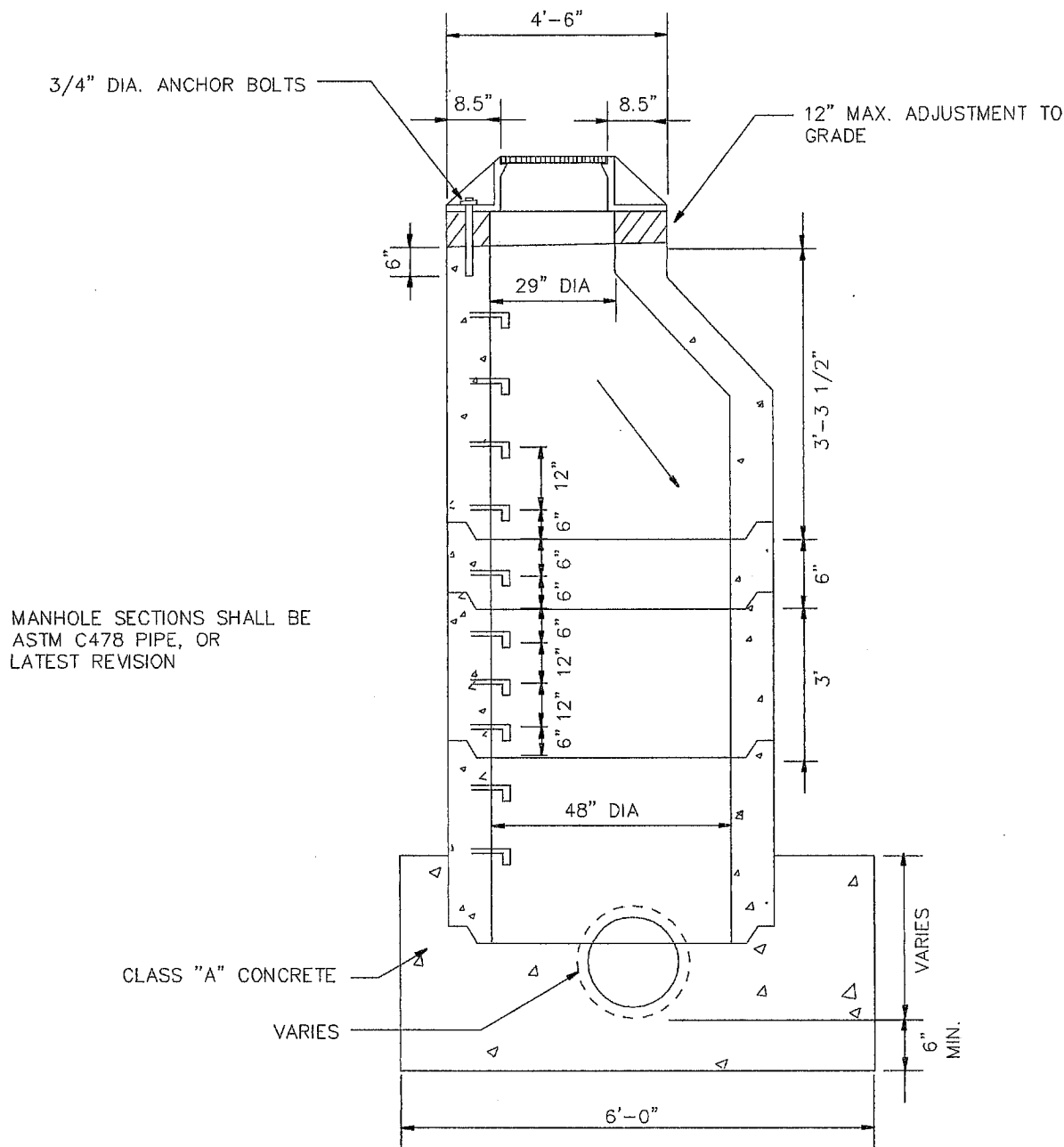
MIDDLESEX TOWNSHIP
133 BROWNS HILL ROAD
VALENCIA, PA 16059

PHONE: (724) 898-3571
FAX: (724) 898-4607

PRE-CAST CONCRETE MANHOLE PIPES OVER 48" DIA.

REVISIONS				FIGURE 402.3D
NO.	DATE	NO.	DATE	
ORIGINAL	OCTOBER 2003			

Dwg. Name: P:\25\2595\001\Phase 20\Land Projects\2595001-20\dwg\402-3C.dwg OCT. 2003



NOT TO SCALE

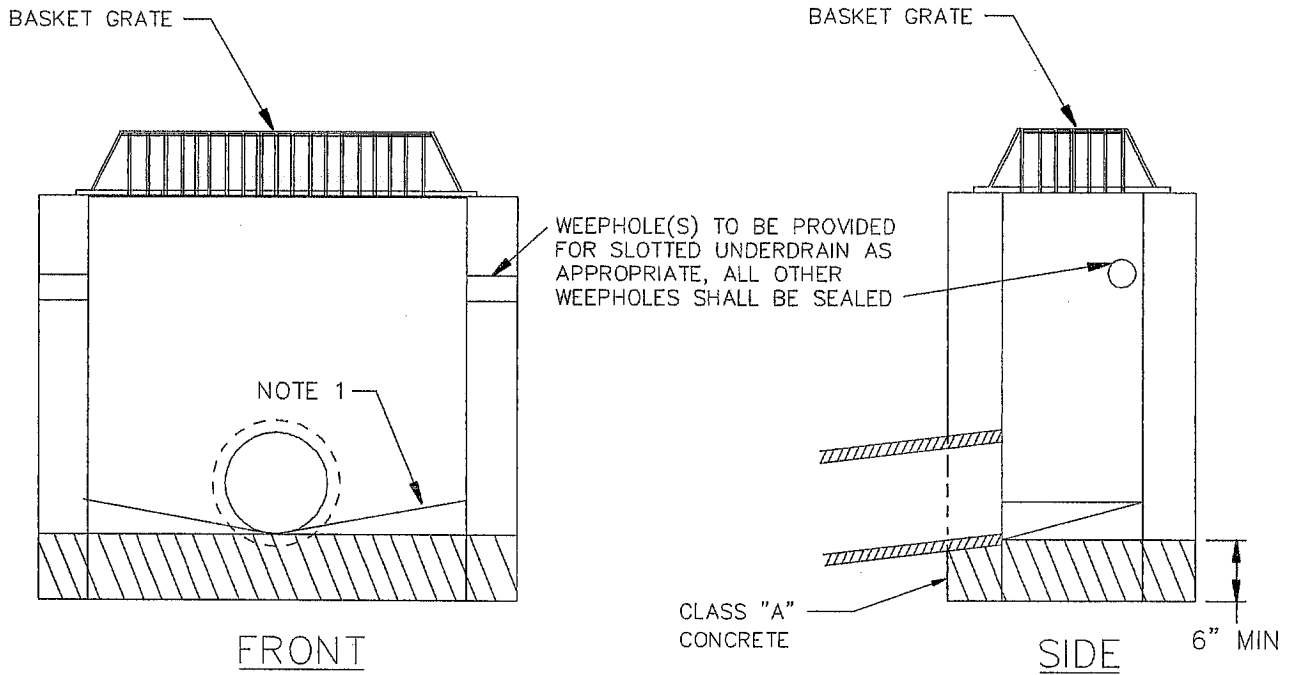
MIDDLESEX TOWNSHIP
133 BROWNS HILL ROAD
VALENCIA, PA 16059

PHONE: (724) 898-3571
FAX: (724) 898-4807

PRE-CAST CONCRETE MANHOLE PIPES UNDER 48" DIA.

REVISIONS				FIGURE
NO.	DATE	NO.	DATE	
ORIGINAL	OCTOBER 2003			402.3C

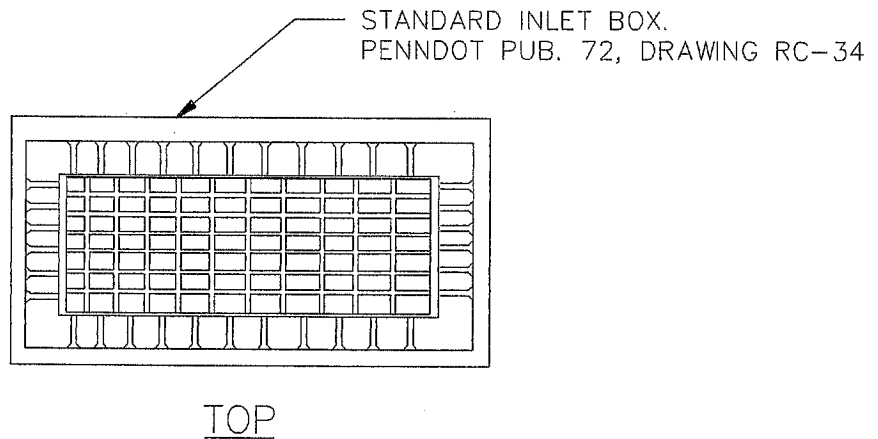
Dwg. Name: P:\25\2595\001\phase 20\land projects\2595001-20\dwg\402-4-1.dwg OCT 2003



NOTES:

1. ALL DRAINAGE STRUCTURES SHALL HAVE POURED-IN-PLACE CONCRETE CHANNEL BOTTOMS.

2. LADDER BARS SHALL BE INSTALLED IN STRUCTURES EXCEEDING A DEPTH OF 5 FEET.



NOT TO SCALE

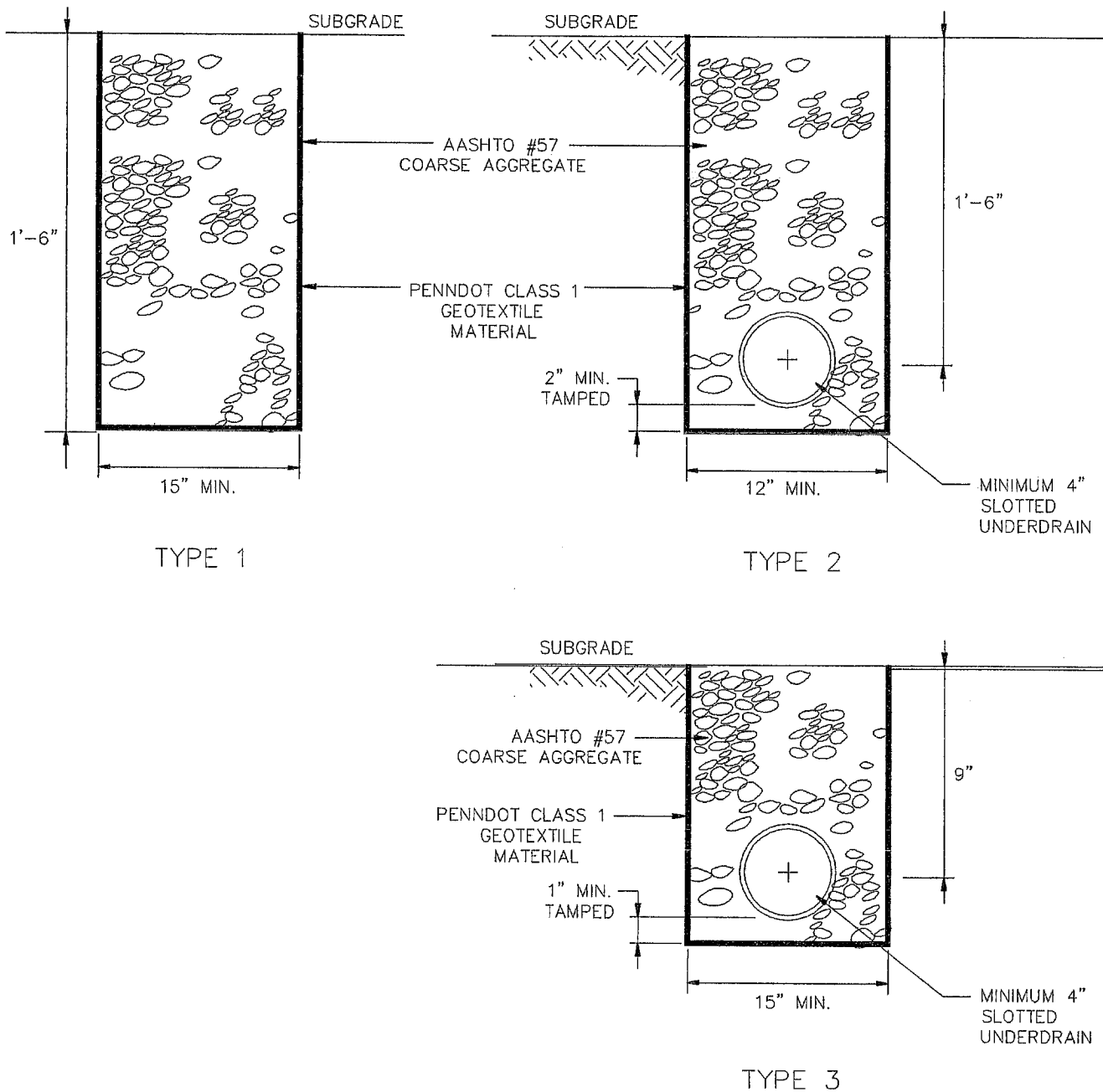
MIDDLESEX TOWNSHIP
133 BROWNS HILL ROAD
VALENCIA, PA 16059

PHONE: (724) 898-3571
FAX: (724) 898-4607

YARD DRAINS

REVISIONS				FIGURE
NO.	DATE	NO.	DATE	
ORIGINAL	OCTOBER 2003			402.4.1

Dwg. Name: P:\25\2595\001\phase 20\land projects\2595001-20\dwg\402-4-2.dwg OCT 2003



NOT TO SCALE

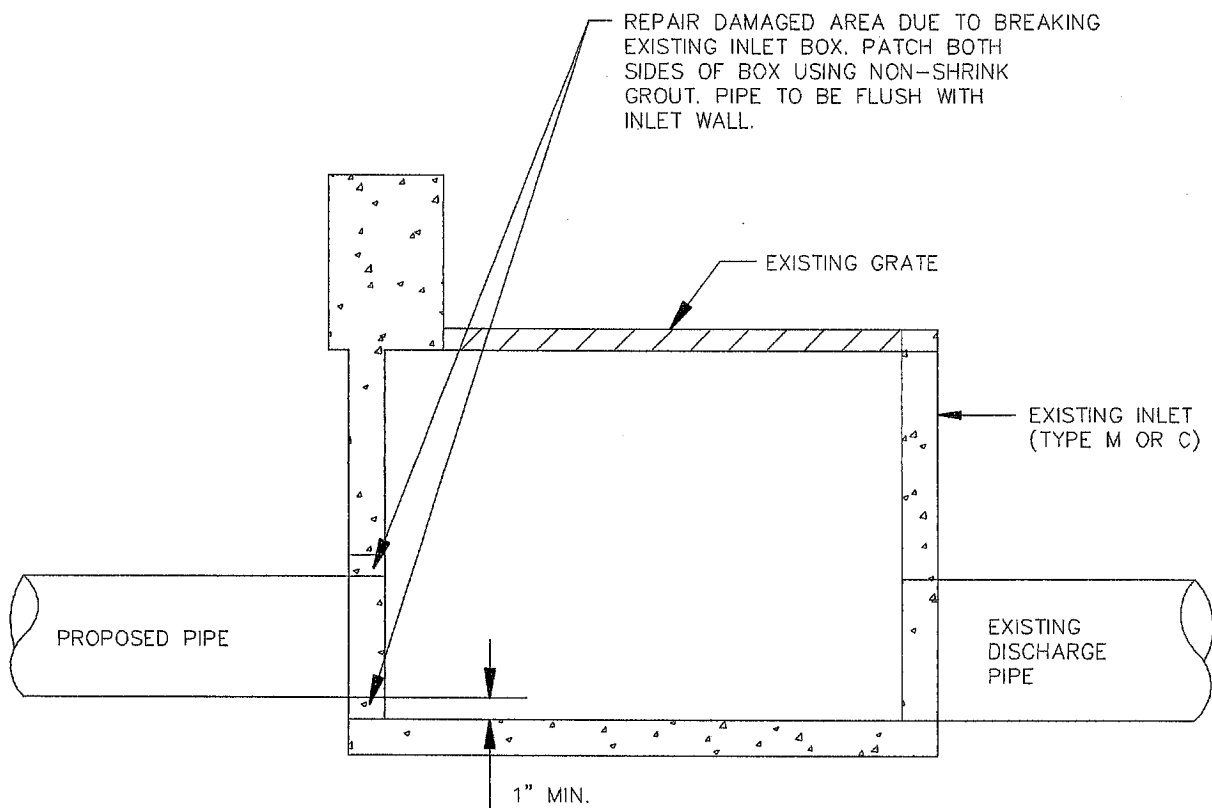
MIDDLESEX TOWNSHIP
133 BROWNS HILL ROAD
VALENCIA, PA 16059

PHONE: (724) 898-3571
FAX: (724) 898-4607

SPECIAL UNDERDRAINS

REVISIONS				FIGURE
NO.	DATE	NO.	DATE	
ORIGINAL	OCTOBER 2003			402.4.2

Dwg. Name: P:\25\2595\001\phase 20\land projects\2595001-20\dwg\402-5.dwg OCT 2003



NOT TO SCALE

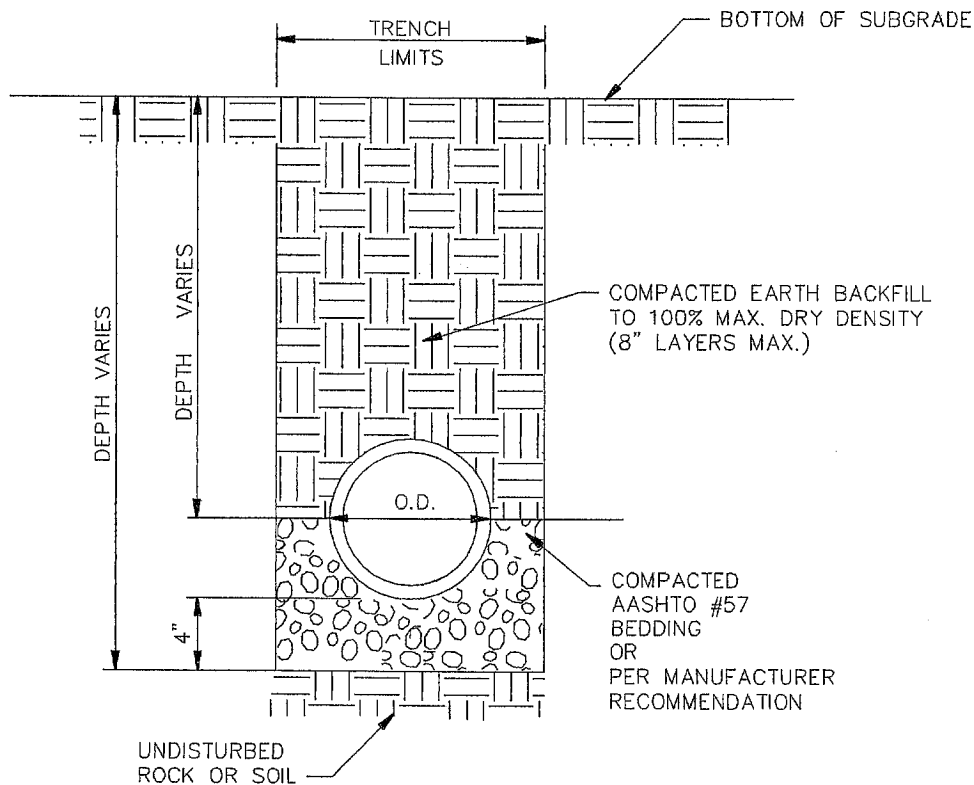
MIDDLESEX TOWNSHIP
133 BROWNS HILL ROAD
VALENCIA, PA 16059

PHONE: (724) 898-3571
FAX: (724) 898-4607

INLET CONNECTIONS DETAIL

REVISIONS				FIGURE
NO.	DATE	NO.	DATE	
ORIGINAL	OCTOBER 2003			402.5

Dwg. Name: P:\25\2595\001\phase 20\land projects\2595001-20\dwg\402-10-1A.dwg OCT 2003



NOTES:

1. MATERIAL OBTAINED IN TRENCH EXCAVATION SHALL NOT BE UTILIZED FOR BACKFILL. THIS REQUIREMENT SHALL APPLY TO BACKFILL IN SHOULDER AREAS AS WELL AS BACKFILL WITHIN THE CARTWAY.
2. AGGREGATE MATERIAL SHALL BE PLACED IN LAYERS NOT TO EXCEED EIGHT INCHES AND COMPACTED TO THE FOLLOWING MINIMUM REQUIREMENTS. SHOULDER AREAS AS WELL AS BACKFILL WITHIN THE CARTWAY.

MAXIMUM DRY WEIGHT OF
BACKFILL MATERIAL (AS
DETERMINED IN ACCORDANCE
WITH AASHTO T99)

LESS THE 95.0 LB./CU.FT.
95.0-99.9 LB./CU. FT.
100.0-109.9 LB./CU. FT.
110.0 OR MORE

MAXIMUM FIELD COMPACTION
REQUIREMENT (PERCENT OF
MAXIMUM DRY WEIGHT)

UNSUITABLE MATERIAL
100.
100.
95%

NOT TO SCALE

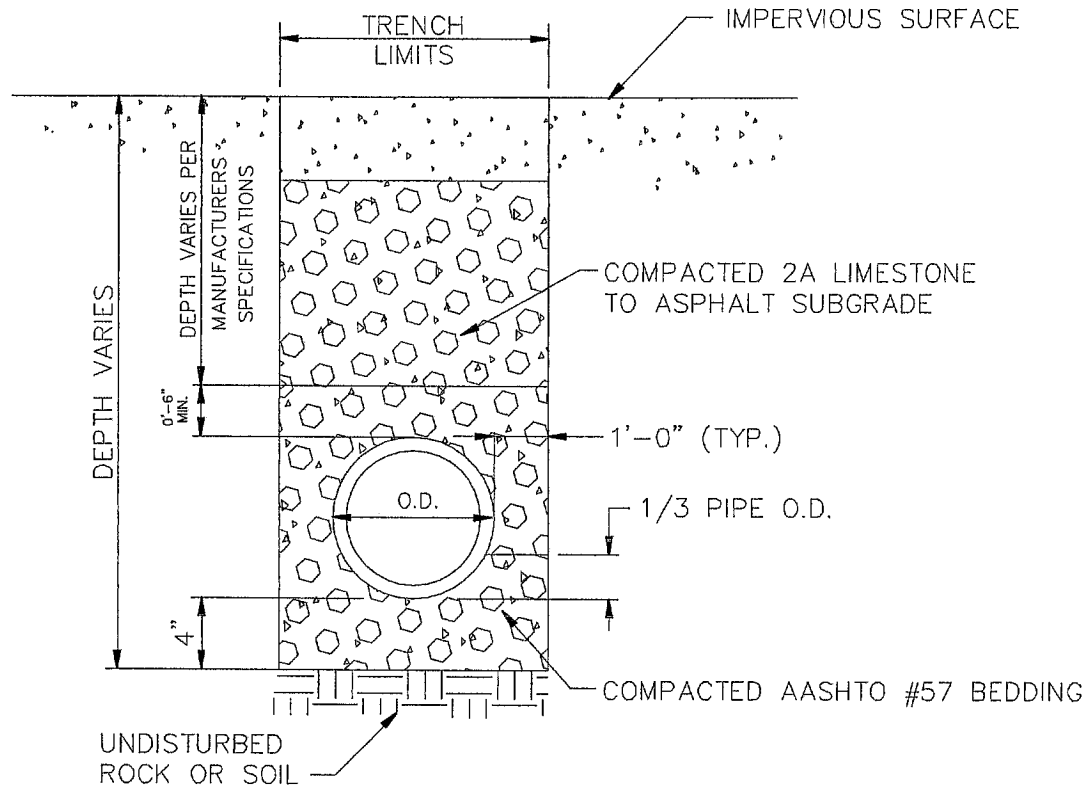
MIDDLESEX TOWNSHIP
133 BROWNS HILL ROAD
VALENCIA, PA 16059

PHONE: (724) 898-3571
FAX: (724) 898-4607

TYPICAL STORM SEWER TRENCH DETAIL-WITHIN R.O.W.

REVISIONS				FIGURE
NO.	DATE	NO.	DATE	
ORIGINAL	OCTOBER 2003			402.10.1A

Dwg. Name: P:\25\2595\001\phase 20\land projects\2595001-20\dwg\402-10-1B.dwg OCT 2003



NOT TO SCALE

NOTES:

1. MATERIAL OBTAINED IN TRENCH EXCAVATION SHALL NOT BE UTILIZED FOR BACKFILL. THIS REQUIREMENT SHALL APPLY TO BACKFILL IN SHOULDER AREAS.
2. AGGREGATE MATERIAL SHALL BE PLACED IN LAYERS NOT TO EXCEED EIGHT INCHES AND COMPACTED TO THE FOLLOWING MINIMUM REQUIREMENTS. WITHIN THE CARTWAY.

MAXIMUM DRY WEIGHT OF
BACKFILL MATERIAL (AS
DETERMINED IN ACCORDANCE
WITH AASHTO T99)

LESS THE 95.0 LB/CU.FT.
95.0-99.9 LB./CU. FT.
100.0-109.9 LB./CU. FT.
110.0 OR MORE

MAXIMUM FIELD COMPACTION
REQUIREMENT (PERCENT OF
MAXIMUM DRY WEIGHT)

UNSUITABLE MATERIAL
100.
100.
95%

NOT TO SCALE

MIDDLESEX TOWNSHIP
133 BROWNS HILL ROAD
VALENCIA, PA 16059

PHONE: (724) 898-3571
FAX: (724) 898-4607

TYPICAL STORM SEWER
TRENCH DETAIL - IMPERVIOUS AREA

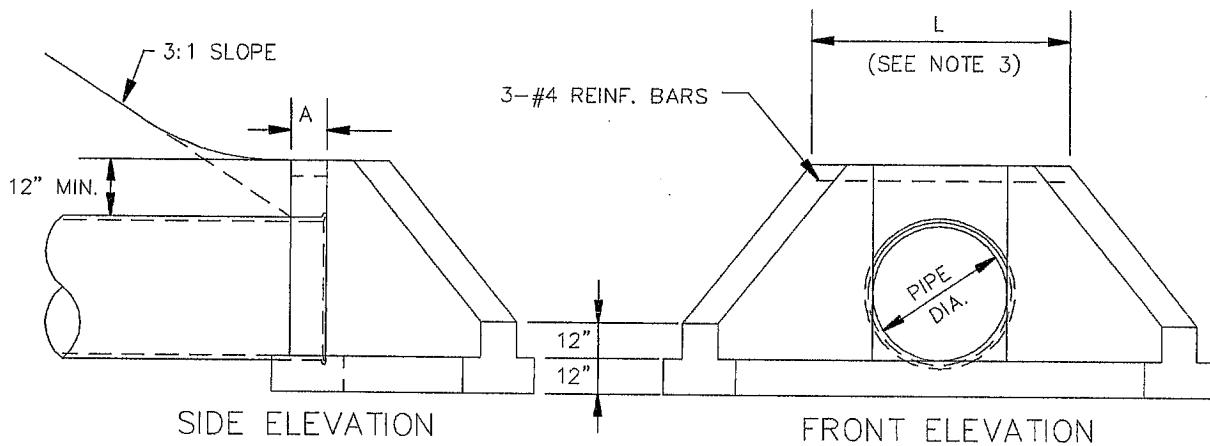
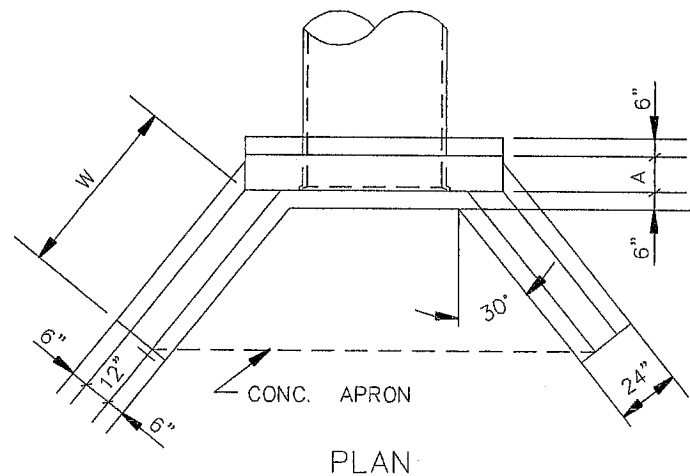
REVISIONS				FIGURE
NO.	DATE	NO.	DATE	
ORIGINAL	OCTOBER 2003			402.10.1B

Dwg. Name: P:\25\2595\001\phase 20\land projects\2595001-20\dwg\402-10-3A.dwg OCT 2003

PIPE DIA.	L*	W	A
15"	4.0'	4.0'	12"
18"	4.0'	4.0'	12"
24"	4.5'	4.25'	12"
36"	4.5'	4.25'	12"
48"	5.0'	4.25'	12"

NOTES:

1. CONCRETE SHALL BE CLASS "A"
2. EXPOSED EDGES SHALL BE CHAMFERED ONE (1) INCH.
3. ADD 1'-0" TO DIMENSION 'L' WHEN ORIFICE PLATE IS TO BE PLACED ON HEADWALL.



NOT TO SCALE

REFERENCE RC-31 - PENNDOT PUBLICATION 72

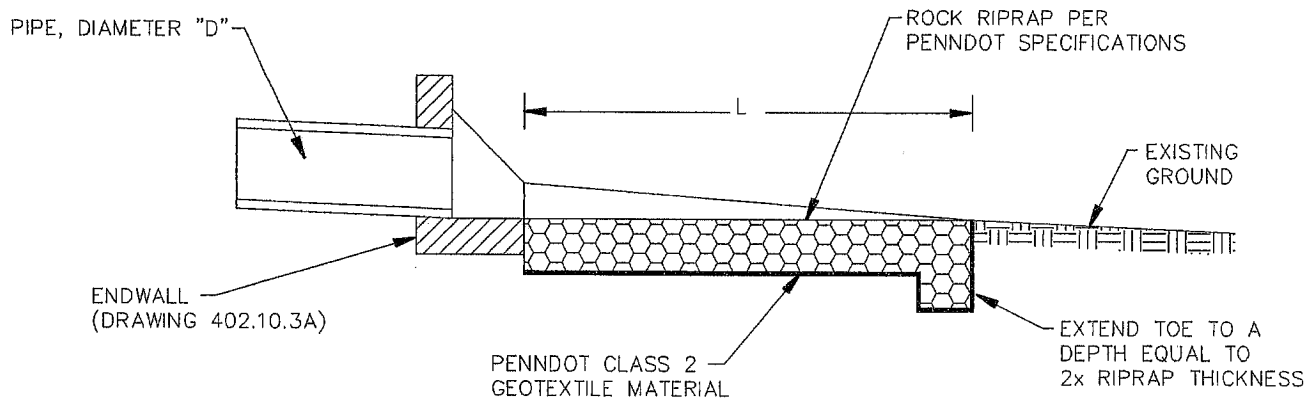
MIDDLESEX TOWNSHIP
133 BROWNS HILL ROAD
VALENCIA, PA 16059

PHONE: (724) 898-3571
FAX: (724) 898-4607

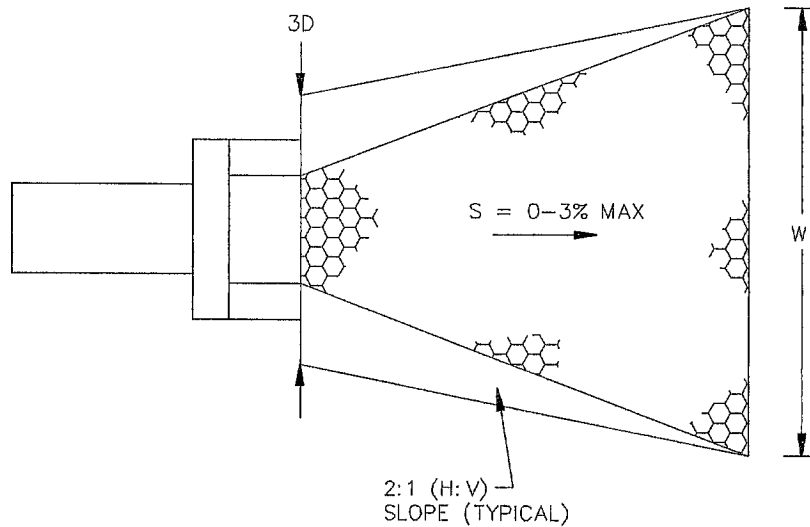
STANDARD TYPE D-W ENDWALL/HEADWALL DETAIL

REVISIONS				FIGURE
NO.	DATE	NO.	DATE	
ORIGINAL	OCTOBER 2003			402.10.3A

Dwg. Name: P:\25\2595\001\phase 20\land projects\2595001-20\dwg\402-10-3B.dwg OCT 2003



PROFILE



PLAN

NOTES:

1. RIPRAP APRON TO BE UTILIZED FOR OUTFALLS DISCHARGING TO UNCONFINED AREAS. PIPES DISCHARGING TO CHANNELS OR SWALES SHOULD BE DESIGNED PER DRAWING SS-04.
2. RIPRAP DESIGN DATA AND SPECIFICATIONS, DIMENSIONS "W", AND "L" TO BE SPECIFIED AS PER PADEP CHAPTER 102, EROSION AND SEDIMENT POLLUTION CONTROL MANUAL.

NOT TO SCALE

MIDDLESEX TOWNSHIP
133 BROWNS HILL ROAD
VALENCIA, PA 16059

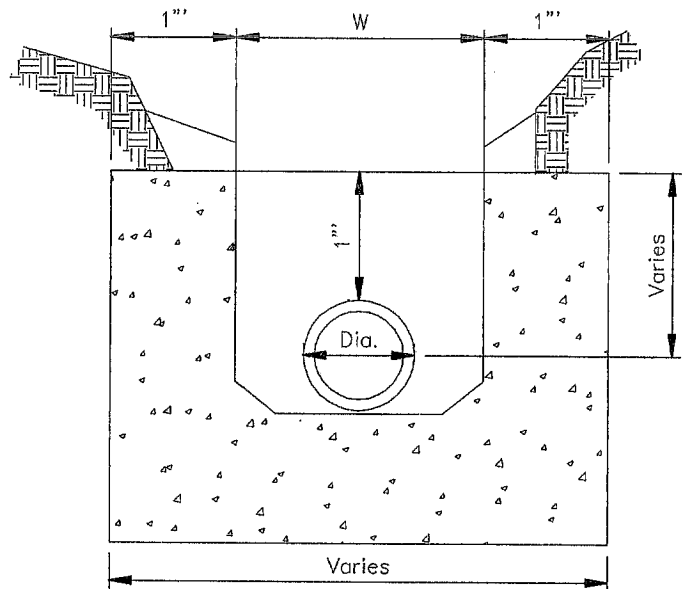
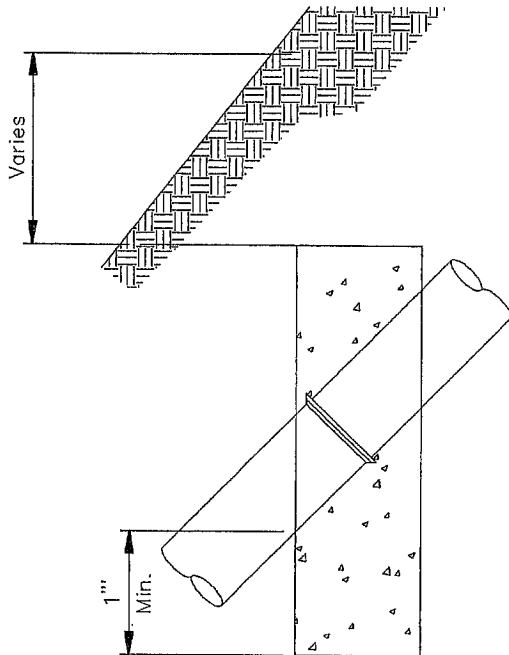
PHONE: (724) 898-3571
FAX: (724) 898-4607

**RIPRAP APRON ENERGY
DISSIPATOR (TYPICAL)**

REVISIONS				FIGURE
NO.	DATE	NO.	DATE	
ORIGINAL	OCTOBER 2003			402.10.3B

Sewers on 20% Slope or Greater Shall Be Anchored With Concrete Anchors or Equal, Spaced As Follows:

- Not Over 36 Feet Center to Center On Grades 20% And Up To 35%
- Not Over 24 Feet Center to Center On Grades 35% And Up To 50%
- Not Over 16 Feet Center to Center On Grades 50% And Over



$$W = 4/3 d + 16" \text{ (Min.)}$$

NOT TO SCALE

MIDDLESEX TOWNSHIP
133 BROWNS HILL ROAD
VALENCIA, PA 16059

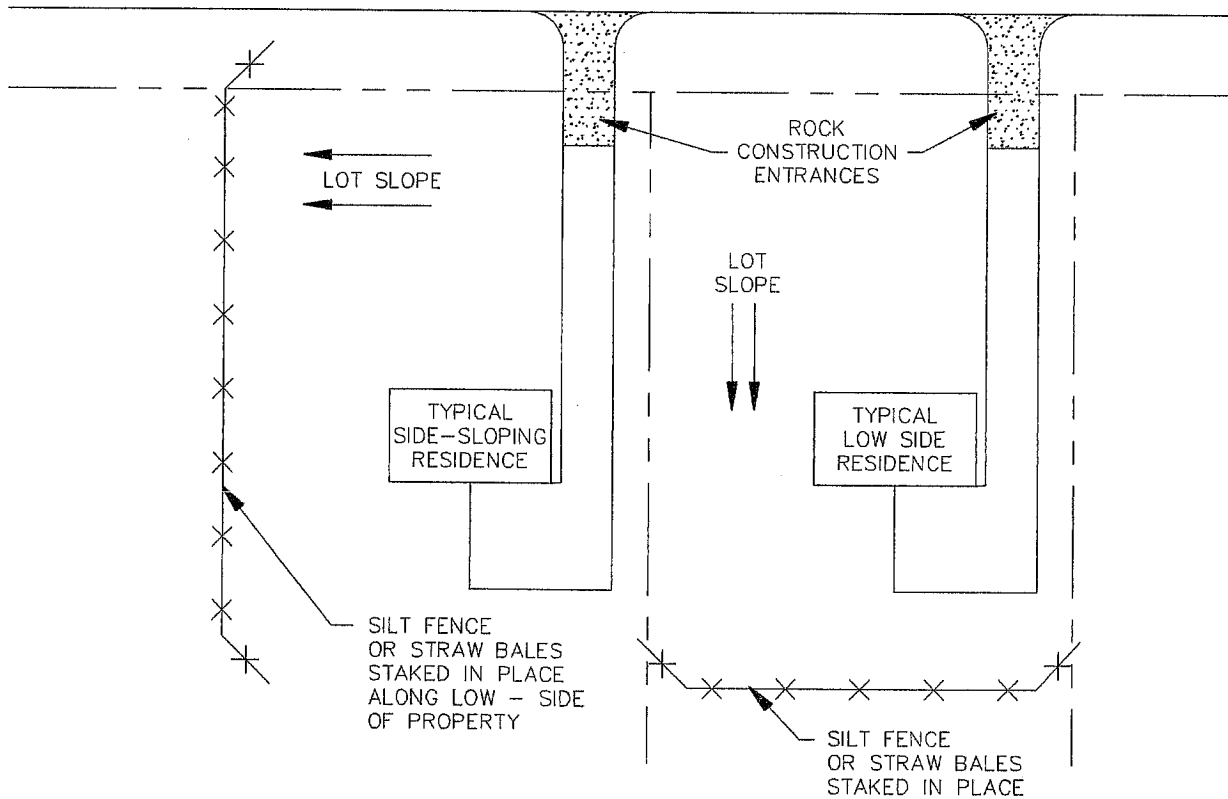
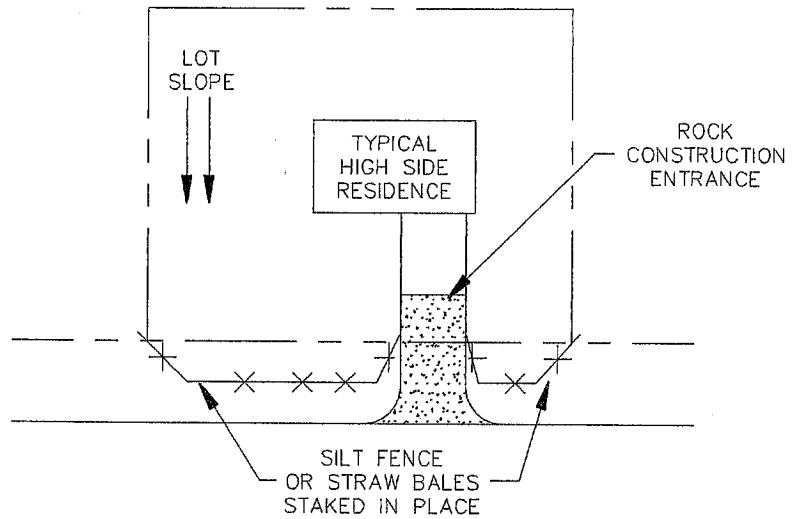
PHONE: (724) 898-3571
FAX: (724) 898-4607

CONCRETE STORM ANCHOR FOR STORM SEWER PIPE

REVISIONS				FIGURE
NO.	DATE	NO.	DATE	
ORIGINAL	OCTOBER 2003			402.10.4

NOTE:

ALL EROSION AND SEDIMENT CONTROL MEASURES TO BE INSTALLED AS PER THE MOST RECENT VERSION OF THE PADEP EROSION AND SEDIMENT POLLUTION CONTROL MANUAL



NOT TO SCALE

Dwg. Name: P:\25\2595\001\phase 20\land projects\2595001--20\dwg\402-10-9-1.dwg OCT 2003

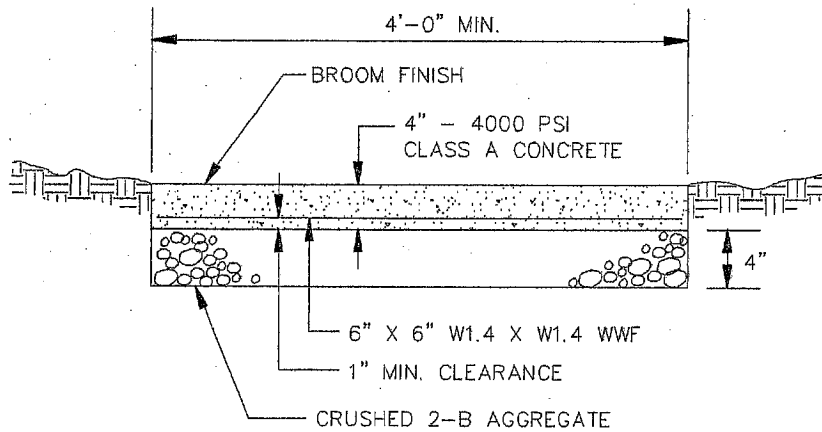
MIDDLESEX TOWNSHIP
133 BROWNS HILL ROAD
VALENCIA, PA 16059

PHONE: (724) 898-3571
FAX: (724) 898-4607

**TYPICAL INDIVIDUAL ON LOT
E&S CONTROLS**

REVISIONS				FIGURE
NO.	DATE	NO.	DATE	
ORIGINAL	OCTOBER 2003			402.10.9.1

Dwg. Name: P:\25\2595\001\phase 20\land projects\2595001-20\dwg\404-1.dwg OCT 2003



NOTES:

1. CONSTRUCT SIDEWALK IN ACCORDANCE WITH PA D.O.T. SPECIFICATIONS
2. PROVIDE TRANSVERSE DUMMY JOINTS AT 5' INTERVALS
3. PROVIDE 1/2" PREMOLDED EXPANSION JOINT MATERIAL AT 20' SPACING
4. SLOPE SIDEWALK AT 1/4" PER FOOT
5. CURING AND PROTECTING COVERS SHALL BE PROVIDED IN ACCORDANCE WITH FORM 408 SECTION 711.

NOT TO SCALE

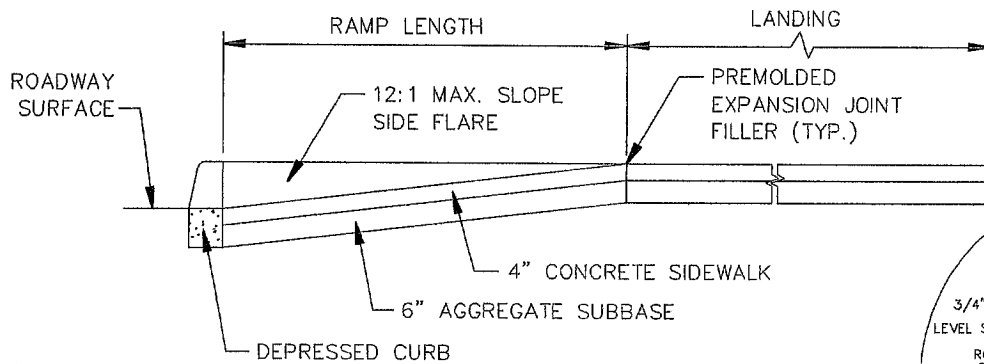
MIDDLESEX TOWNSHIP
133 BROWNS HILL ROAD
VALENCIA, PA 16059

PHONE: (724) 898-3571
FAX: (724) 898-4607

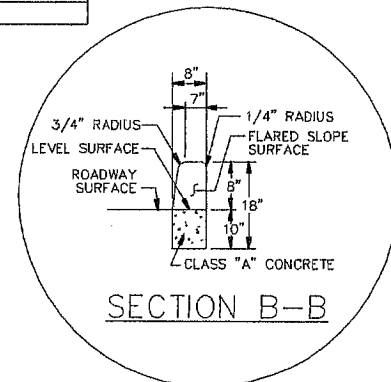
TYPICAL SIDEWALK
DETAIL

REVISIONS				FIGURE
NO.	DATE	NO.	DATE	
ORIGINAL	OCTOBER 2003			404.1

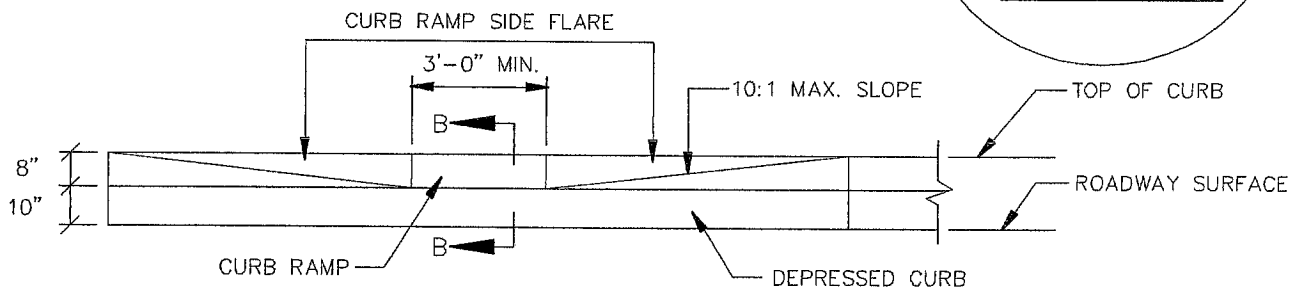
Dwg. Name: P:\25\2595\001\phase 20\land projects\2595001-20\dwg\405-2-5.dwg OCT 2003



SECTION A-A

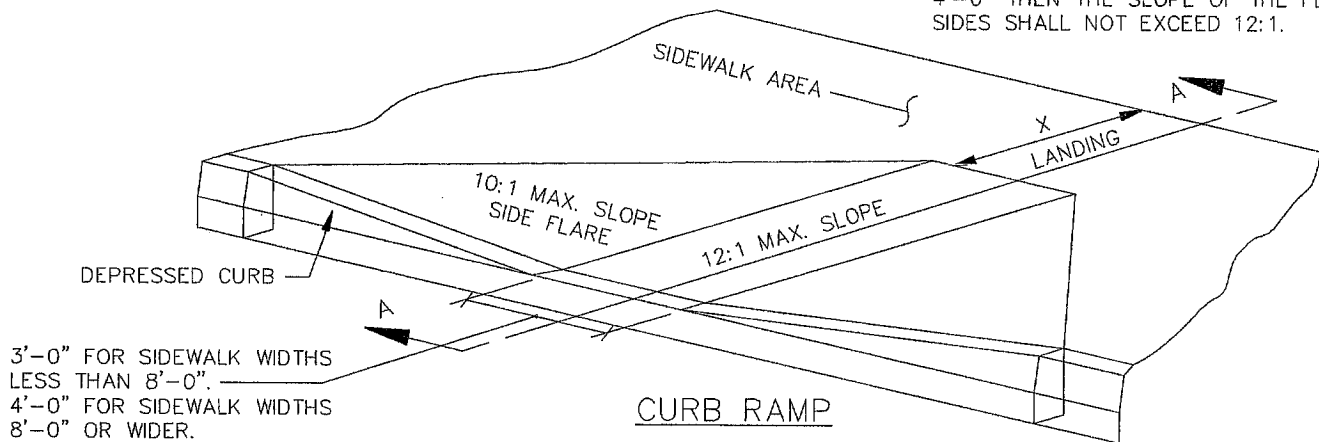


SECTION B-B



ELEVATION

X SHALL BE EQUAL TO OR GREATER THAN 3'-0". IF X IS LESS THAN 4'-0" THEN THE SLOPE OF THE FLARED SIDES SHALL NOT EXCEED 12:1.



NOT TO SCALE

REFERENCE RC-67 - PENNDOT PUBLICATION 72

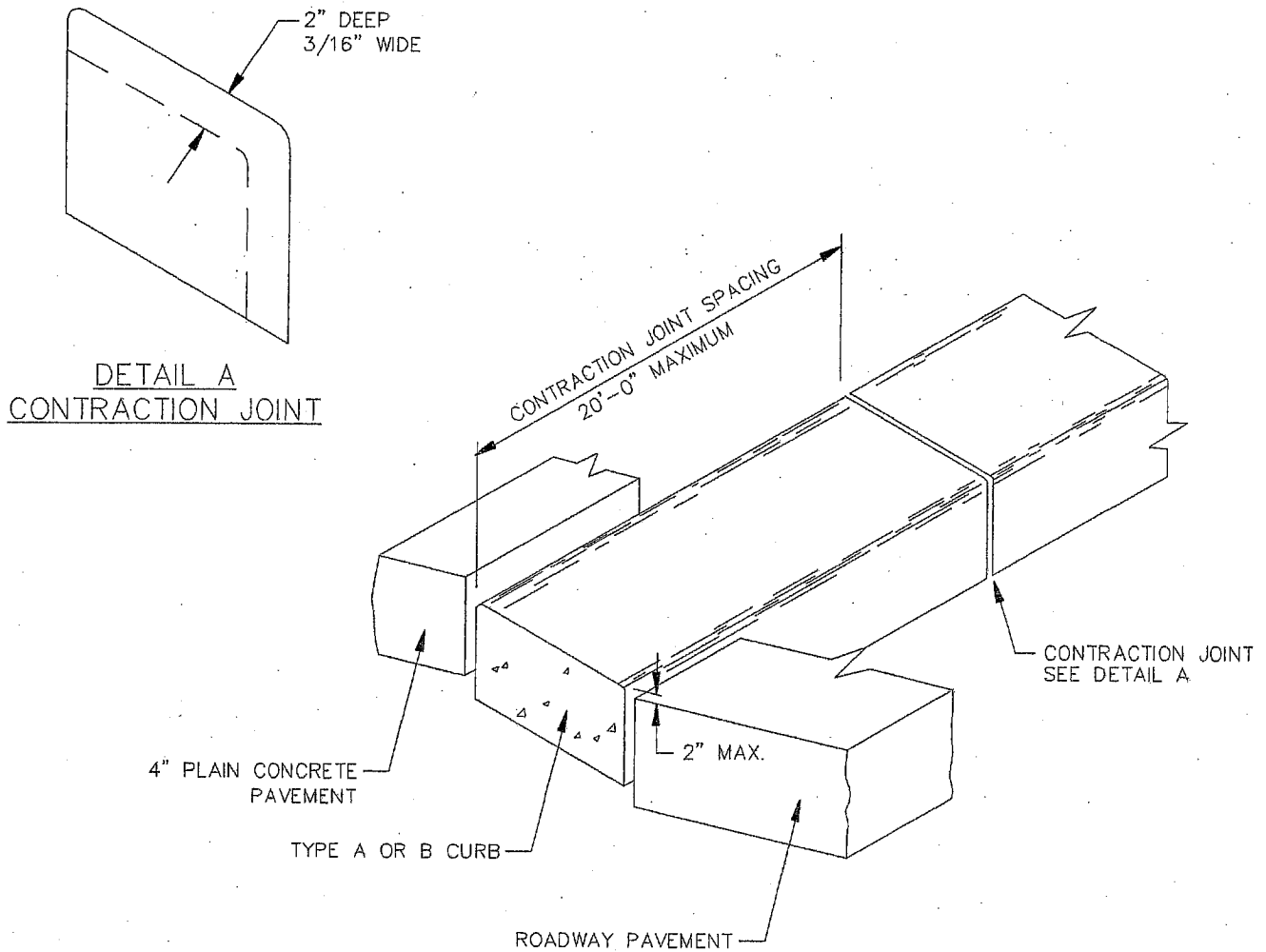
MIDDLESEX TOWNSHIP
133 BROWNS HILL ROAD
VALENCIA, PA 16059

PHONE: (724) 898-3571
FAX: (724) 898-4607

CURB CUT/ RAMP DETAIL

REVISIONS				FIGURE
NO.	DATE	NO.	DATE	
ORIGINAL	OCTOBER 2003			405.2.5

Dwg. Name: P:\25\2595\001\phase 20\land projects\2595001-20\dwg\406-2-2.dwg OCT 2003



NOT TO SCALE

REFERENCE RC-65 - PENNDOT PUBLICATION 72

MIDDLESEX TOWNSHIP
133 BROWNS HILL ROAD
VALENCIA, PA 16059

PHONE: (724) 898-3571
FAX: (724) 898-4607

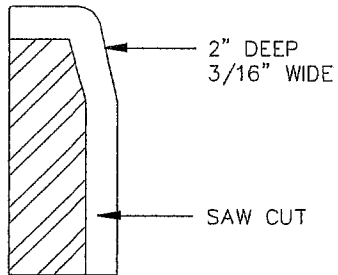
CONCRETE MOUNTABLE CURB DETAIL

REVISIONS			
NO.	DATE	NO.	DATE
ORIGINAL	OCTOBER 2003		

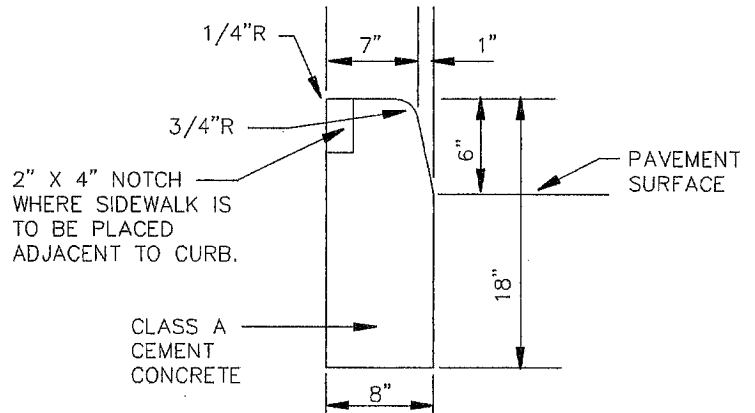
FIGURE

406.2.2

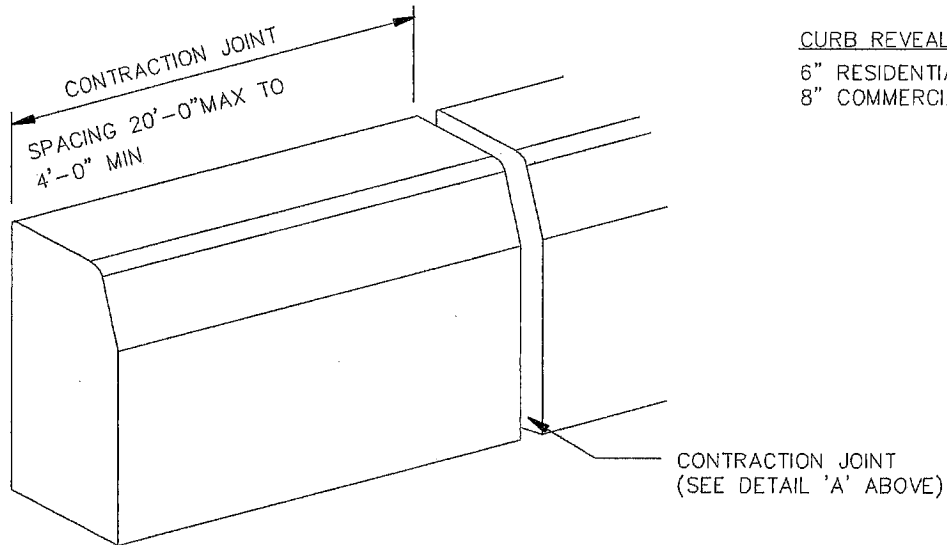
Dwg. Name: P:\25\2595\001\phase 20\land projects\2595001-20\dwg\406-2-2-1.dwg OCT 2003



DETAIL 'A' CONTRACTION JOINT



TYPICAL CROSS-SECTION



NOT TO SCALE

REFERENCE RC-64 - PENNDOT PUBLICATION 72

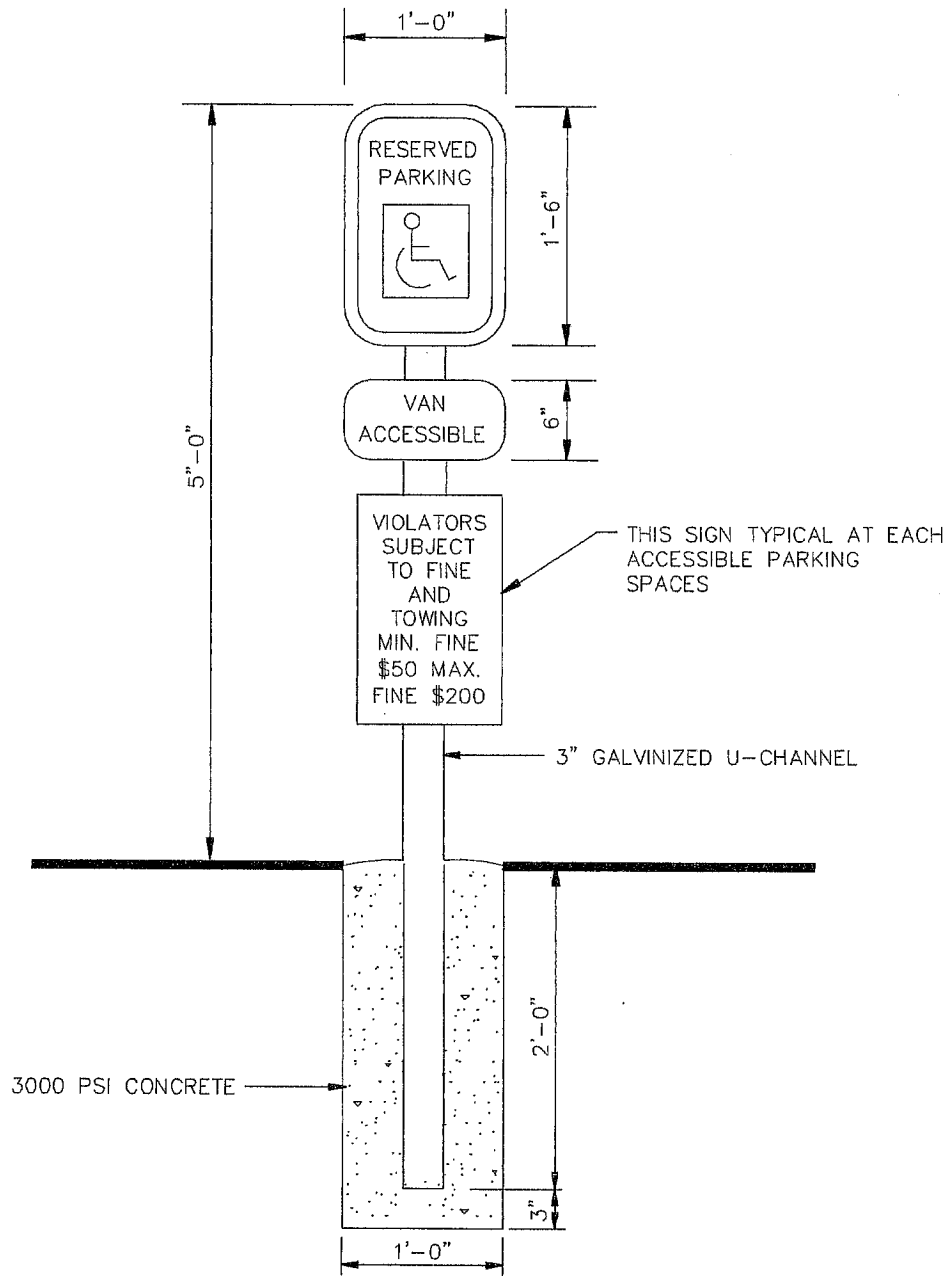
MIDDLESEX TOWNSHIP
133 BROWNS HILL ROAD
VALENCIA, PA 16059

PHONE: (724) 898-3571
FAX: (724) 898-4607

CURB DETAIL

REVISIONS				FIGURE
NO.	DATE	NO.	DATE	
ORIGINAL	OCTOBER 2003			406.2.2.1

Dwg. Name: P:\25\2595\001\phase 20\land projects\2595001-20\dwg\406-2-4.dwg OCT 2003



NOT TO SCALE

REFERENCE PENNDOT PUBLICATION 236
R7-8,R7-8A,R7-8B

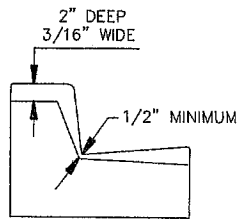
MIDDLESEX TOWNSHIP
133 BROWNS HILL ROAD
VALENCIA, PA 16059

PHONE: (724) 898-3571
FAX: (724) 898-4607

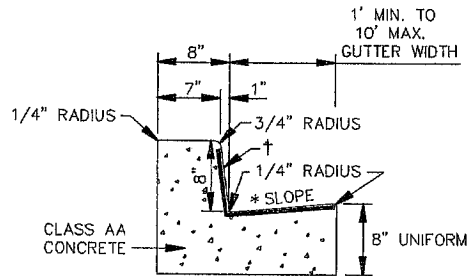
TYPICAL ACCESSIBLE PARKING SIGN

REVISIONS				FIGURE
NO.	DATE	NO.	DATE	
ORIGINAL	OCTOBER 2003			406.2.4

Dwg. Name: P:\25\2595\001\phase 20\land projects\2595001-20\dwg\406-2-5.dwg OCT 2003



DETAIL C
CONTRACTION
JOINT

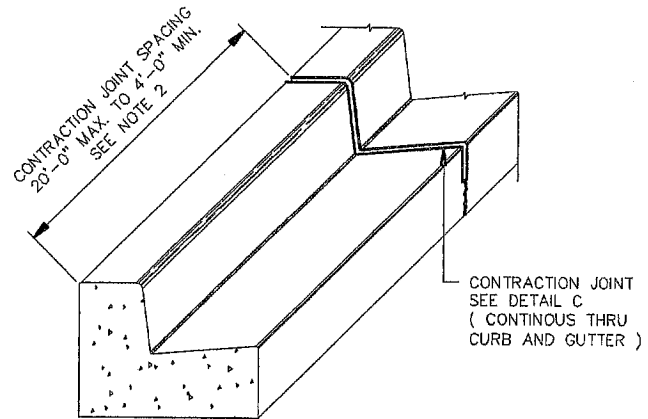


TYPICAL
CROSS SECTION

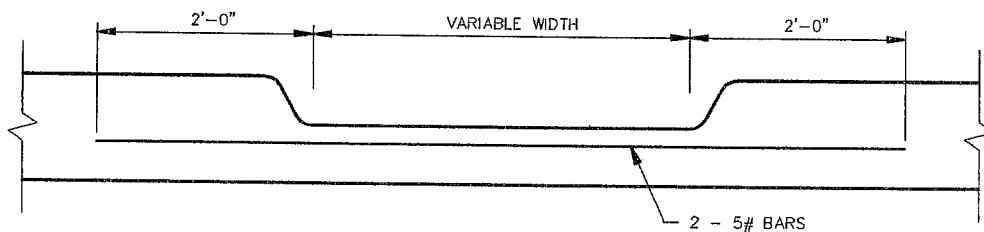
- * UNDER 5' GUTTER WIDTH = 1" PER FT. MIN.
5' AND GREATER GUTTER WIDTH = 1/2" PER FT. MIN.
† REPRESENTS WIDTH OF GUTTER FOR
COMPUTING PAY AREA.

NOTES

1. PROVIDE MATERIALS AND CONSTRUCTION MEETING THE REQUIREMENTS OF PUBLICATION 408, SECTION 630 FOR PLAIN CONCRETE CURB AND DEPRESSED CURB, SECTION 640 FOR PLAIN CONCRETE CURB AND FOR PLAIN CONCRETE CURB GUTTER.
2. SPACE CONTRACTION JOINTS IN UNIFORM LENGTHS OR SECTIONS.
3. PLACE 3/4 - INCH PREMOLED EXPANSION JOINT FILLER MATERIAL AT STRUCTURES AND AT THE END OF THE WORK DAY, CUT MATERIAL TO CONFORM TO AREA ADJACENT TO CURB OR TO CONFORM TO CROSS SECTIONAL AREA OF CURB.
4. SEE RC-50 FOR PLAIN CONCRETE CURB SLOPED TOP TREATMENT AT END OF STRUCTURES.



PLAIN CONCRETE CURB AND GUTTER



DEPRESSED CURB FOR DRIVES

NOT TO SCALE

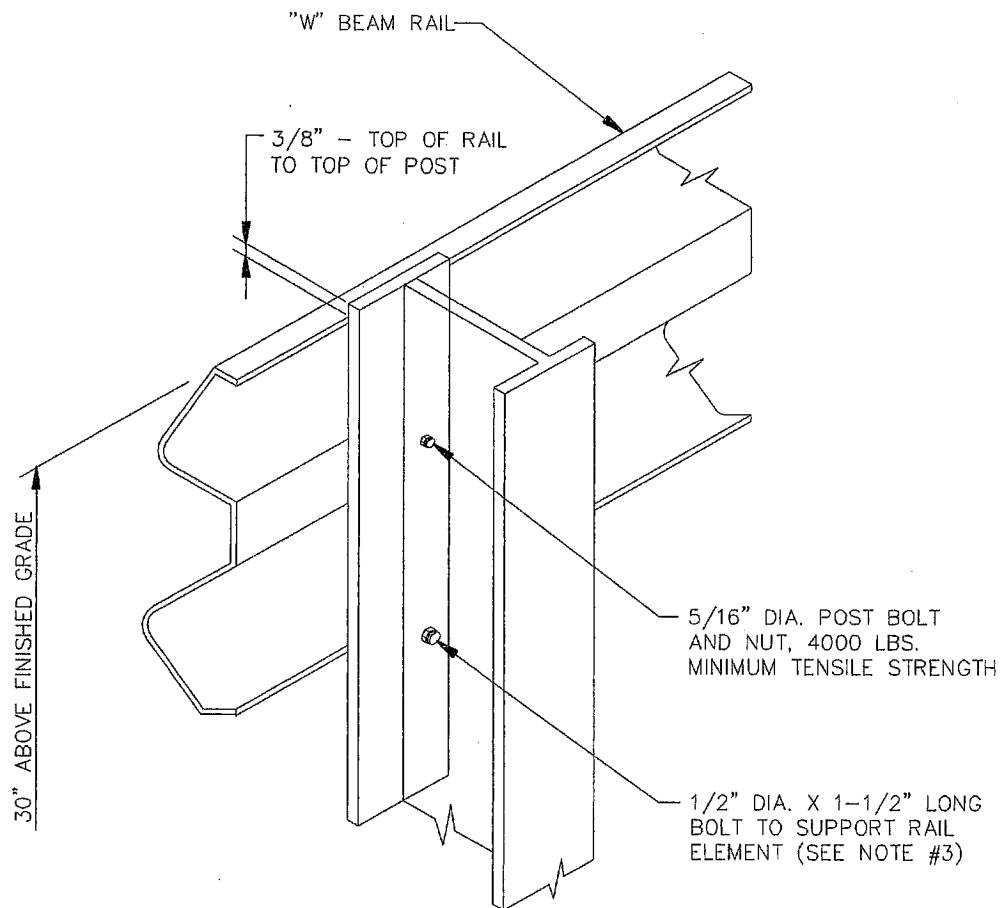
REFERENCE DRAWING RC-64 - PENNDOT PUBLICATION 72

MIDDLESEX TOWNSHIP
133 BROWNS HILL ROAD
VALENCIA, PA 16059

PHONE: (724) 898-3571
FAX: (724) 898-4607

CURBS AND GUTTERS

REVISIONS				FIGURE
NO.	DATE	NO.	DATE	
ORIGINAL	OCTOBER 2003			406.2.5



NOTES

1. PROVIDE MATERIALS AND CONSTRUCTION MEETING THE REQUIREMENTS OF PUBLICATION 408, SECTION 520.
2. THE 3-3/8" X 2-1/4" COLD FORMED CHANNEL POST, S3 X 5.7 POST AND ALUMINUM ALLOY POST MAY BE BID AS ALTERNATES FOR TYPE 2 WEAK POST GUIDE RAIL SYSTEM; HOWEVER, MIXING OF DIFFERENT POSTS WILL NOT BE ACCEPTABLE WITHIN THE PROJECT.
3. DURING ERECTION, USE TEMPORARY SUPPORT BOLTS OR TEMPORARY DRIFT PINS TO SUPPORT THE RAIL ELEMENT UNTIL THE 5/16" POST BOLTS ARE PROPERLY TORQUED.
4. ATTACH W-BEAM RAIL ELEMENT TO EACH POST, SPLICE ONLY AT POSTS AND LAP IN THE DIRECTION OF TRAFFIC.

NOT TO SCALE

REFERENCE RC-53 - PENNDOT PUBLICATION 72

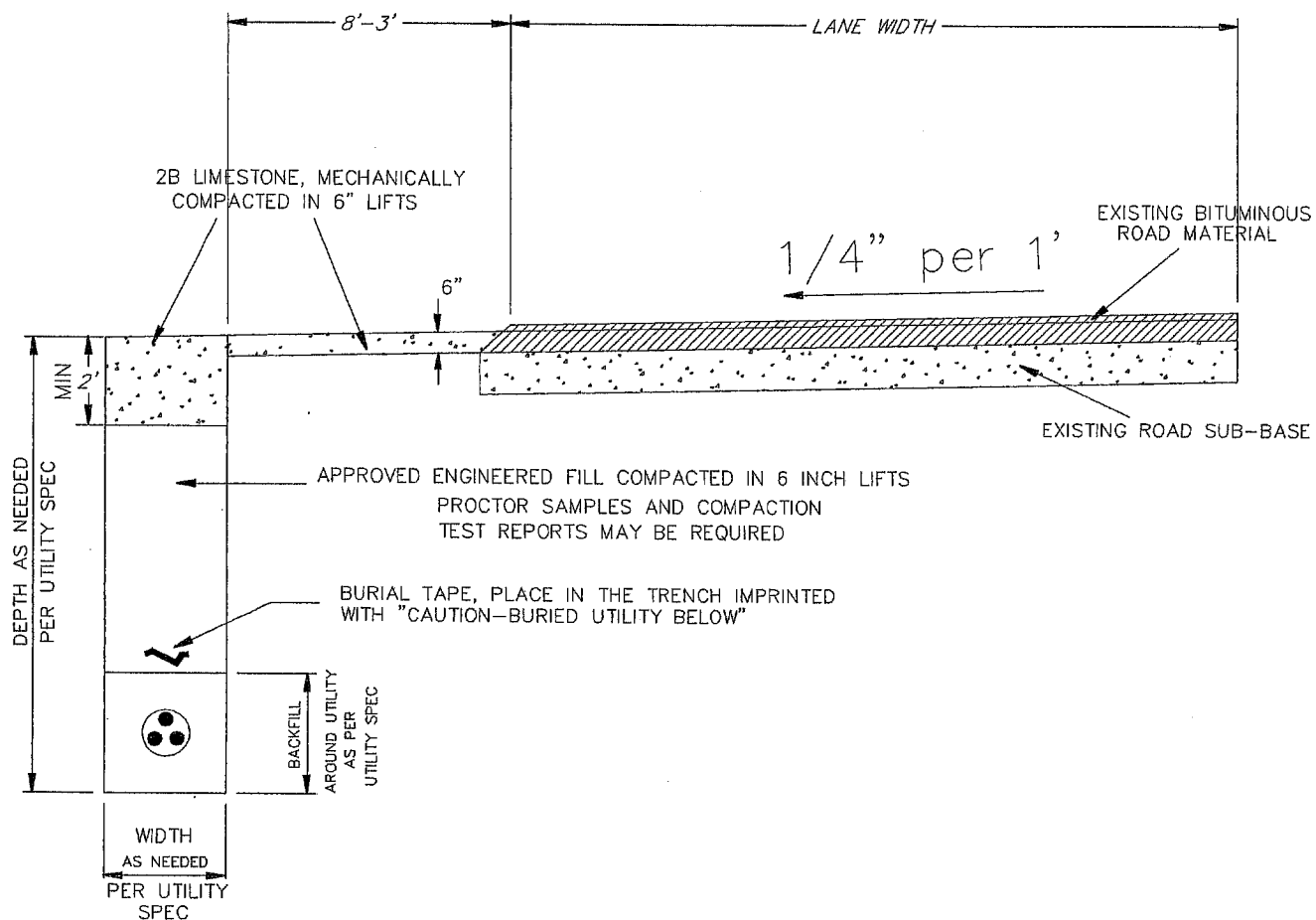
MIDDLESEX TOWNSHIP
133 BROWNS HILL ROAD
VALENCIA, PA 16059

PHONE: (724) 898-3571
FAX: (724) 898-4807

GUIDE RAIL DETAIL

REVISIONS				FIGURE
NO.	DATE	NO.	DATE	
ORIGINAL	OCTOBER 2003			
				408.1

NOTE: WHERE THE EDGE OF THE TRENCH CLOSEST TO THE ROAD IS WITHIN (3) THREE FEET OF THE ROAD EDGE THE TRENCH SHALL BE BACKFILLED 100% ABOVE THE PIPE ZONE WITH 2B LIMESTONE MECHANICALLY COMPACTED IN SIX INCH LIFTS



NOT TO SCALE

MIDDLESEX TOWNSHIP
133 BROWNS HILL ROAD
VALENCIA, PA 16059

PHONE: (724) 898-3571
FAX: (724) 898-4607

PIPE ZONE BACKFILL FOR UNIMPROVED SHOULDER

REVISIONS				FIGURE
NO.	DATE	NO.	DATE	
ORIGINAL	OCTOBER 2003			409.3.1

DECIDUOUS TREE - PRUNE BACK 1/4"
ON SITE. SPRAY WITH ANTIDESICCANT
ACCORDING TO MANUFACTURER'S
INSTRUCTIONS



REFERENCE RC-91 PENNDOT PUB. 72

PHONE: (724) 898-3571
FAX: (724) 898-4607

EVERGREEN/DECIDUOUS PLANTING DETAIL

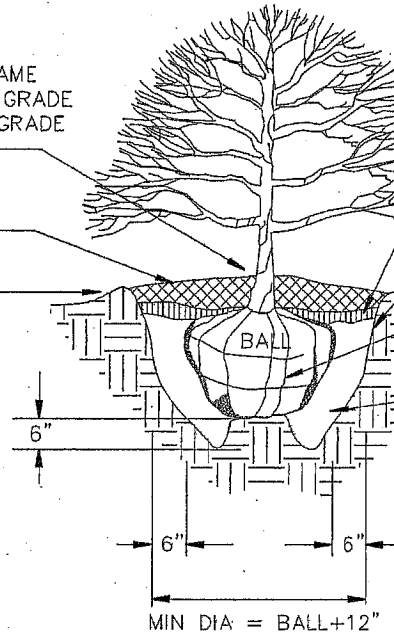
REVISIONS				FIGURE
NO.	DATE	NO.	DATE	
ORIGINAL	OCTOBER 2003			416.1

Dwg. Name: P:\25\2595\001\phase 20\land projects\2595001-20\dwg\416-2.dwg OCT 2003

SHRUB SHALL BEAR THE SAME
RELATIONSHIP TO FINISHED GRADE
AS THE SHRUBS ORIGINAL GRADE
BEFORE DIGGING.

BERM

FINISHED GRADE



3" COMPOSTED WOOD CHIP MULCH
OR SHREDDED BARK

4" HIGH EARTH SAUCER

SCARIFY SIDES & BOTTOM

FOLD BACK BURLAP FROM TOP 1/3
OF BALL ONLY. REMOVE ENTIRE
WRAP IF PLASTIC.

BACKFILL WITH SOIL REMOVED FROM
HOLE AMENDED WITH 1 PART COMPOSE
MANURE TO 3 PARTS SOIL. BACKFILL
AMENDED SOIL IN 6" LAYERS. EACH
LAYER TO BE WATERED PRIOR TO
PLACEMENT OF NEXT LAYER

NOT TO SCALE

REFERENCE PENNDOT PUB. 72

MIDDLESEX TOWNSHIP
133 BROWNS HILL ROAD
VALENCIA, PA 16059

PHONE: (724) 898-3571
FAX: (724) 898-4607

SHRUB PLANTING DETAIL

REVISIONS			
NO.	DATE	NO.	DATE
ORIGINAL	OCTOBER 2003		

FIGURE

416.2